

SUZ12 Antibody (Center)

Purified Rabbit Polyclonal Antibody (Pab)

Catalog # AP21396c

Product Information

Application	WB, E
Primary Accession	Q15022
Reactivity	Human, Mouse
Host	Rabbit
Clonality	polyclonal
Isotype	Rabbit IgG
Clone Names	RB51415
Calculated MW	83055

Additional Information

Gene ID	23512
Other Names	Polycomb protein SUZ12, Chromatin precipitated E2F target 9 protein, ChET 9 protein, Joined to JAZF1 protein, Suppressor of zeste 12 protein homolog, SUZ12, CHET9, JJAZ1, KIAA0160
Target/Specificity	This SUZ12 antibody is generated from a rabbit immunized with a KLH conjugated synthetic peptide between 375-408 amino acids from the Central region of human SUZ12.
Dilution	WB~~1:2000 E~~Use at an assay dependent concentration.
Format	Purified polyclonal antibody supplied in PBS with 0.09% (W/V) sodium azide. This antibody is purified through a protein A column, followed by peptide affinity purification.
Storage	Maintain refrigerated at 2-8°C for up to 2 weeks. For long term storage store at -20°C in small aliquots to prevent freeze-thaw cycles.
Precautions	SUZ12 Antibody (Center) is for research use only and not for use in diagnostic or therapeutic procedures.

Protein Information

Name	SUZ12
Synonyms	CHET9, JJAZ1, KIAA0160
Function	Polycomb group (PcG) protein. Component of the PRC2 complex, which methylates 'Lys-9' (H3K9me) and 'Lys-27' (H3K27me) of histone H3, leading to

transcriptional repression of the affected target gene (PubMed:[15225548](#), PubMed:[15231737](#), PubMed:[15385962](#), PubMed:[16618801](#), PubMed:[17344414](#), PubMed:[18285464](#), PubMed:[28229514](#), PubMed:[29499137](#), PubMed:[31959557](#)). The PRC2 complex may also serve as a recruiting platform for DNA methyltransferases, thereby linking two epigenetic repression systems (PubMed:[12351676](#), PubMed:[12435631](#), PubMed:[15099518](#), PubMed:[15225548](#), PubMed:[15385962](#), PubMed:[15684044](#), PubMed:[16431907](#), PubMed:[18086877](#), PubMed:[18285464](#)). Genes repressed by the PRC2 complex include HOXC8, HOXA9, MYT1 and CDKN2A (PubMed:[15231737](#), PubMed:[16618801](#), PubMed:[17200670](#), PubMed:[31959557](#)).

Cellular Location

Nucleus Note=Localizes to chromatin as part of the PRC2 complex

Tissue Location

Overexpressed in breast and colon cancer.

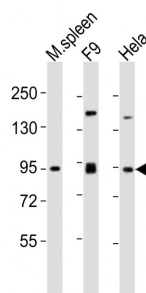
Background

Polycomb group (PcG) protein. Component of the PRC2/EED- EZH2 complex, which methylates 'Lys-9' (H3K9me) and 'Lys-27' (H3K27me) of histone H3, leading to transcriptional repression of the affected target gene. The PRC2/EED-EZH2 complex may also serve as a recruiting platform for DNA methyltransferases, thereby linking two epigenetic repression systems. Genes repressed by the PRC2/EED-EZH2 complex include HOXC8, HOXA9, MYT1 and CDKN2A.

References

Nagase T.,et al.DNA Res. 2:167-174(1995).
 Koontz J.I.,et al.Proc. Natl. Acad. Sci. U.S.A. 98:6348-6353(2001).
 Weinmann A.S.,et al.Mol. Cell. Biol. 21:6820-6832(2001).
 Kuzmichev A.,et al.Genes Dev. 16:2893-2905(2002).
 Cao R.,et al.Science 298:1039-1043(2002).

Images



All lanes : Anti-SUZ12 Antibody (Center) at 1:2000 dilution
 Lane 1: mouse spleen lysates Lane 2: F9 whole cell lysates
 Lane 3: HeLa whole cell lysates Lysates/proteins at 20 µg per lane. Secondary Goat Anti-Rabbit IgG, (H+L), Peroxidase conjugated at 1/10000 dilution Predicted band size : 83 kDa Blocking/Dilution buffer: 5% NFDM/TBST.

Please note: All products are 'FOR RESEARCH USE ONLY. NOT FOR USE IN DIAGNOSTIC OR THERAPEUTIC PROCEDURES'.