

# SH3GL3 Antibody (C-term)

Purified Rabbit Polyclonal Antibody (Pab)

Catalog # AP21397b

## Product Information

---

Application	WB, E
Primary Accession	<a href="#">Q99963</a>
Reactivity	Human
Host	Rabbit
Clonality	polyclonal
Isotype	Rabbit IgG
Clone Names	RB52938
Calculated MW	39285

## Additional Information

---

Gene ID	6457
Other Names	Endophilin-A3, EEN-B2, Endophilin-3, SH3 domain protein 2C, SH3 domain-containing GRB2-like protein 3, SH3GL3, CNSA3, SH3D2C
Target/Specificity	This SH3GL3 antibody is generated from a rabbit immunized with a KLH conjugated synthetic peptide between 250-282 amino acids from the C-terminal region of human SH3GL3.
Dilution	WB~~1:2000 E~~Use at an assay dependent concentration.
Format	Purified polyclonal antibody supplied in PBS with 0.09% (W/V) sodium azide. This antibody is purified through a protein A column, followed by peptide affinity purification.
Storage	Maintain refrigerated at 2-8°C for up to 2 weeks. For long term storage store at -20°C in small aliquots to prevent freeze-thaw cycles.
Precautions	SH3GL3 Antibody (C-term) is for research use only and not for use in diagnostic or therapeutic procedures.

## Protein Information

---

Name	SH3GL3
Synonyms	CNSA3, SH3D2C
Function	Implicated in endocytosis. May recruit other proteins to membranes with high curvature (By similarity).

<b>Cellular Location</b>	Cytoplasm {ECO:0000250 UniProtKB:O35180}. Early endosome membrane {ECO:0000250 UniProtKB:O35180}; Peripheral membrane protein {ECO:0000250 UniProtKB:O35180}. Note=Associated with postsynaptic endosomes in hippocampal neurons. Associated with presynaptic endosomes in olfactory neurons {ECO:0000250 UniProtKB:O35180}
<b>Tissue Location</b>	Brain and testis.

## Background

---

Implicated in endocytosis. May recruit other proteins to membranes with high curvature (By similarity).

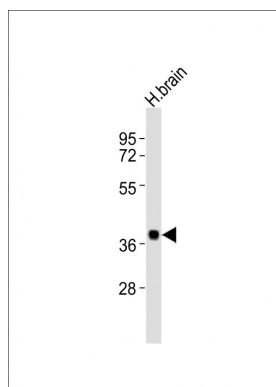
## References

---

Giachino C.,et al.Genomics 41:427-434(1997).  
 So C.W.,et al.Submitted (MAR-1998) to the EMBL/GenBank/DDBJ databases.  
 Sittler A.,et al.Mol. Cell 2:427-436(1998).  
 Cestra G.,et al.J. Biol. Chem. 274:32001-32007(1999).  
 Trevaskis J.,et al.Endocrinology 146:3757-3764(2005).

## Images

---



Anti-SH3GL3 Antibody (C-term)at 1:2000 dilution + human brain lysates Lysates/proteins at 20 µg per lane. Secondary Goat Anti-Rabbit IgG, (H+L), Peroxidase conjugated at 1/10000 dilution Predicted band size : 39 kDa Blocking/Dilution buffer: 5% NFDM/TBST.

Please note: All products are 'FOR RESEARCH USE ONLY. NOT FOR USE IN DIAGNOSTIC OR THERAPEUTIC PROCEDURES'.