

PLXNB1 Antibody (C-term)

Purified Rabbit Polyclonal Antibody (Pab)

Catalog # AP21403b

Product Information

Application	WB, E
Primary Accession	O43157
Reactivity	Human, Rat, Mouse
Host	Rabbit
Clonality	polyclonal
Isotype	Rabbit IgG
Clone Names	RB52899
Calculated MW	232298

Additional Information

Gene ID	5364
Other Names	Plexin-B1, Semaphorin receptor SEP, PLXNB1, KIAA0407, PLXN5, SEP
Target/Specificity	This PLXNB1 antibody is generated from a rabbit immunized with a KLH conjugated synthetic peptide between 1715-1749 amino acids from the C-terminal region of human PLXNB1.
Dilution	WB~~1:2000 E~~Use at an assay dependent concentration.
Format	Purified polyclonal antibody supplied in PBS with 0.09% (W/V) sodium azide. This antibody is purified through a protein A column, followed by peptide affinity purification.
Storage	Maintain refrigerated at 2-8°C for up to 2 weeks. For long term storage store at -20°C in small aliquots to prevent freeze-thaw cycles.
Precautions	PLXNB1 Antibody (C-term) is for research use only and not for use in diagnostic or therapeutic procedures.

Protein Information

Name	PLXNB1
Synonyms	KIAA0407, PLXN5, SEP
Function	Receptor for SEMA4D (PubMed: 19843518 , PubMed: 20877282 , PubMed: 21912513). Plays a role in GABAergic synapse development (By similarity). Mediates SEMA4A- and SEMA4D-dependent inhibitory synapse development (By similarity). Plays a role in RHOA activation and subsequent

changes of the actin cytoskeleton (PubMed:[12196628](#), PubMed:[15210733](#)). Plays a role in axon guidance, invasive growth and cell migration (PubMed:[12198496](#)).

Cellular Location	[Isoform 1]: Cell membrane; Single-pass type I membrane protein [Isoform 3]: Secreted
Tissue Location	Highly expressed in fetal kidney, and at slightly lower levels in fetal brain, lung and liver

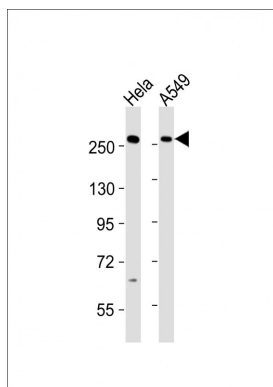
Background

Receptor for SEMA4D. Plays a role in RHOA activation and subsequent changes of the actin cytoskeleton. Plays a role in axon guidance, invasive growth and cell migration.

References

Ishikawa K.,et al.DNA Res. 4:307-313(1997).
Tamagnone L.,et al.Cell 99:71-80(1999).
Tamagnone L.,et al.Cell 104:321-321(2001).
Maestrini E.,et al.Proc. Natl. Acad. Sci. U.S.A. 93:674-678(1996).
Mural R.J.,et al.Submitted (JUL-2005) to the EMBL/GenBank/DDBJ databases.

Images



All lanes : Anti-PLXNB1 Antibody (C-term) at 1:2000 dilution Lane 1: Hela whole cell lysates Lane 2: A549 whole cell lysates Lysates/proteins at 20 µg per lane. Secondary Goat Anti-Rabbit IgG, (H+L), Peroxidase conjugated at 1/10000 dilution Predicted band size : 232 kDa Blocking/Dilution buffer: 5% NFDM/TBST.

Please note: All products are 'FOR RESEARCH USE ONLY. NOT FOR USE IN DIAGNOSTIC OR THERAPEUTIC PROCEDURES'.