

# CTSL Antibody (N-Term)

Purified Rabbit Polyclonal Antibody (Pab)

Catalog # AP21415a

## Product Information

---

<b>Application</b>	WB, E
<b>Primary Accession</b>	<a href="#">P07711</a>
<b>Reactivity</b>	Human
<b>Host</b>	Rabbit
<b>Clonality</b>	polyclonal
<b>Isotype</b>	Rabbit IgG
<b>Clone Names</b>	RB52889
<b>Calculated MW</b>	37564

## Additional Information

---

<b>Gene ID</b>	1514
<b>Other Names</b>	Cathepsin L1, Cathepsin L, Major excreted protein, MEP, Cathepsin L1 heavy chain, Cathepsin L1 light chain, CTSL, CTSL1
<b>Target/Specificity</b>	This CTSL antibody is generated from a rabbit immunized with a KLH conjugated synthetic peptide between 97-129 amino acids from the human CTSL.
<b>Dilution</b>	WB~~1:2000 E~~Use at an assay dependent concentration.
<b>Format</b>	Purified polyclonal antibody supplied in PBS with 0.09% (W/V) sodium azide. This antibody is purified through a protein A column, followed by peptide affinity purification.
<b>Storage</b>	Maintain refrigerated at 2-8°C for up to 2 weeks. For long term storage store at -20°C in small aliquots to prevent freeze-thaw cycles.
<b>Precautions</b>	CTSL Antibody (N-Term) is for research use only and not for use in diagnostic or therapeutic procedures.

## Protein Information

---

<b>Name</b>	CTSL ( <a href="#">HGNC:2537</a> )
<b>Synonyms</b>	CTSL1
<b>Function</b>	Thiol protease important for the overall degradation of proteins in lysosomes (Probable). Plays a critical for normal cellular functions such as general protein turnover, antigen processing and bone remodeling. Involved

in the solubilization of cross-linked TG/thyroglobulin and in the subsequent release of thyroid hormone thyroxine (T4) by limited proteolysis of TG/thyroglobulin in the thyroid follicle lumen (By similarity). In neuroendocrine chromaffin cells secretory vesicles, catalyzes the prohormone proenkephalin processing to the active enkephalin peptide neurotransmitter (By similarity). In thymus, regulates CD4(+) T cell positive selection by generating the major histocompatibility complex class II (MHCII) bound peptide ligands presented by cortical thymic epithelial cells. Also mediates invariant chain processing in cortical thymic epithelial cells (By similarity). Major elastin-degrading enzyme at neutral pH. Accumulates as a mature and active enzyme in the extracellular space of antigen presenting cells (APCs) to regulate degradation of the extracellular matrix in the course of inflammation (By similarity). Secreted form generates endostatin from COL18A1 (PubMed:[10716919](#)). Critical for cardiac morphology and function. Plays an important role in hair follicle morphogenesis and cycling, as well as epidermal differentiation (By similarity). Required for maximal stimulation of steroidogenesis by TIMP1 (By similarity).

## Cellular Location

Lysosome {ECO:0000250|UniProtKB:P06797}. Apical cell membrane {ECO:0000250|UniProtKB:P06797}; Peripheral membrane protein {ECO:0000250|UniProtKB:P06797}; Extracellular side {ECO:0000250|UniProtKB:P06797}. Cytoplasmic vesicle, secretory vesicle, chromaffin granule {ECO:0000250|UniProtKB:P25975}. Secreted, extracellular space {ECO:0000250|UniProtKB:P06797}. Secreted {ECO:0000250|UniProtKB:P06797}. Note=Localizes to the apical membrane of thyroid epithelial cells. Released at extracellular space by activated dendritic cells and macrophages {ECO:0000250|UniProtKB:P06797}

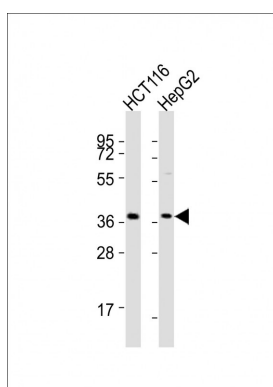
## Background

Important for the overall degradation of proteins in lysosomes.

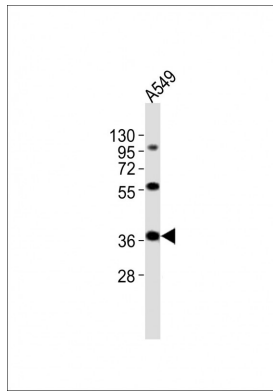
## References

Gal S.,et al.Biochem. J. 253:303-306(1988).  
Joseph L.J.,et al.J. Clin. Invest. 81:1621-1629(1988).  
Ebert L.,et al.Submitted (JUN-2004) to the EMBL/GenBank/DDBJ databases.  
Bechtel S.,et al.BMC Genomics 8:399-399(2007).  
Humphray S.J.,et al.Nature 429:369-374(2004).

## Images



All lanes : Anti-CTSL Antibody (N-Term) at 1:8000 dilution  
Lane 1: HCT116 whole cell lysates Lane 2: HepG2 whole cell lysates  
Lysates/proteins at 20 µg per lane. Secondary Goat Anti-Rabbit IgG, (H+L), Peroxidase conjugated at 1/10000 dilution  
Predicted band size : 38 kDa  
Blocking/Dilution buffer: 5% NFDM/TBST.



Anti-CTSL Antibody (N-Term) at 1:2000 dilution + A549 whole cell lysates. Lysates/proteins at 20 µg per lane. Secondary Goat Anti-Rabbit IgG, (H+L), Peroxidase conjugated at 1/10000 dilution. Predicted band size : 38 kDa. Blocking/Dilution buffer: 5% NFDM/TBST.

Please note: All products are 'FOR RESEARCH USE ONLY. NOT FOR USE IN DIAGNOSTIC OR THERAPEUTIC PROCEDURES'.