

LMX1A Antibody (C-term)

Purified Rabbit Polyclonal Antibody (Pab)

Catalog # AP21429b

Product Information

Application	WB, E
Primary Accession	Q8TE12
Reactivity	Human, Mouse
Host	Rabbit
Clonality	polyclonal
Isotype	Rabbit IgG
Clone Names	RB50873
Calculated MW	42747

Additional Information

Gene ID	4009
Other Names	LIM homeobox transcription factor 1-alpha, LIM/homeobox protein 11, LMX-11, LIM/homeobox protein LMX1A, LMX1A
Target/Specificity	This LMX1A antibody is generated from a rabbit immunized with a KLH conjugated synthetic peptide between 303-337 amino acids from the C-terminal region of human LMX1A.
Dilution	WB~~1:2000 E~~Use at an assay dependent concentration.
Format	Purified polyclonal antibody supplied in PBS with 0.09% (W/V) sodium azide. This antibody is purified through a protein A column, followed by peptide affinity purification.
Storage	Maintain refrigerated at 2-8°C for up to 2 weeks. For long term storage store at -20°C in small aliquots to prevent freeze-thaw cycles.
Precautions	LMX1A Antibody (C-term) is for research use only and not for use in diagnostic or therapeutic procedures.

Protein Information

Name	LMX1A
Function	Acts as a transcriptional activator by binding to an A/T-rich sequence, the FLAT element, in the insulin gene promoter. Required for development of the roof plate and, in turn, for specification of dorsal cell fates in the CNS and developing vertebrae (By similarity).

Cellular Location	Nucleus {ECO:0000255 PROSITE-ProRule:PRU00108}.
Tissue Location	Isoform 1 is expressed in many tissues. Not found in heart, liver, spleen and testis. Relatively highly expressed in fetal brain. Isoform LMX1A-4AB is expressed in testis

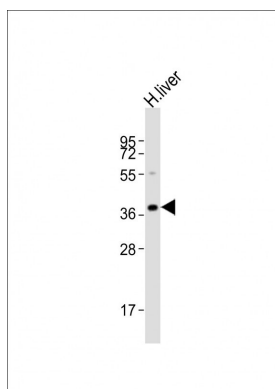
Background

Acts as a transcriptional activator by binding to an A/T-rich sequence, the FLAT element, in the insulin gene promoter. Required for development of the roof plate and, in turn, for specification of dorsal cell fates in the CNS and developing vertebrae (By similarity).

References

Thameem F.,et al.Gene 290:217-225(2002).
Ota T.,et al.Nat. Genet. 36:40-45(2004).
Gregory S.G.,et al.Nature 441:315-321(2006).
Mural R.J.,et al.Submitted (JUL-2005) to the EMBL/GenBank/DDBJ databases.

Images



Anti-LMX1A Antibody (C-term)at 1:2000 dilution + human liver lysates Lysates/proteins at 20 µg per lane. Secondary Goat Anti-Rabbit IgG, (H+L), Peroxidase conjugated at 1/10000 dilution. Predicted band size : 43 kDa
Blocking/Dilution buffer: 5% NFDm/TBST.

Please note: All products are 'FOR RESEARCH USE ONLY. NOT FOR USE IN DIAGNOSTIC OR THERAPEUTIC PROCEDURES'.