

PCP2 Antibody (Center)

Purified Rabbit Polyclonal Antibody (Pab)

Catalog # AP21440c

Product Information

| | |
|-------------------|------------------------|
| Application | WB, E |
| Primary Accession | Q8IVA1 |
| Reactivity | Human, Mouse |
| Host | Rabbit |
| Clonality | polyclonal |
| Isotype | Rabbit IgG |
| Clone Names | RB49334 |
| Calculated MW | 14547 |

Additional Information

| | |
|--------------------|--|
| Gene ID | 126006 |
| Other Names | Purkinje cell protein 2 homolog, PCP2 |
| Target/Specificity | This PCP2 antibody is generated from a rabbit immunized with a KLH conjugated synthetic peptide between 91-125 amino acids from the Central region of human PCP2. |
| Dilution | WB~~1:1000 E~~Use at an assay dependent concentration. |
| Format | Purified polyclonal antibody supplied in PBS with 0.05% (V/V) Proclin 300. This antibody is prepared by Saturated Ammonium Sulfate (SAS) precipitation followed by dialysis against PBS. |
| Storage | Maintain refrigerated at 2-8°C for up to 2 weeks. For long term storage store at -20°C in small aliquots to prevent freeze-thaw cycles. |
| Precautions | PCP2 Antibody (Center) is for research use only and not for use in diagnostic or therapeutic procedures. |

Protein Information

| | |
|----------|--|
| Name | PCP2 |
| Function | May function as a cell-type specific modulator for G protein- mediated cell signaling. |

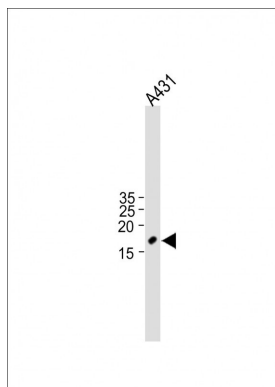
Background

May function as a cell-type specific modulator for G protein-mediated cell signaling.

References

Grimwood J., et al. Nature 428:529-535(2004).

Images



All lanes : Anti-PCP2 Antibody (Center) at 1:1000 dilution
Lane 1: A431 whole cell lysate Lysates/proteins at 20 µg per lane. Secondary Goat Anti-Rabbit IgG, (H+L), Peroxidase conjugated (ASP1615) at 1/15000 dilution. Observed band size : 15kDa Blocking/Dilution buffer: 5% NFDM/TBST.

Please note: All products are 'FOR RESEARCH USE ONLY. NOT FOR USE IN DIAGNOSTIC OR THERAPEUTIC PROCEDURES'.