

# FCGR1A Antibody (Center)

Purified Rabbit Polyclonal Antibody (Pab)

Catalog # AP21448c

## Product Information

---

Application	WB, E
Primary Accession	<a href="#">P12314</a>
Reactivity	Human
Host	Rabbit
Clonality	polyclonal
Isotype	Rabbit IgG
Clone Names	RB52153
Calculated MW	42632

## Additional Information

---

Gene ID	2209
Other Names	High affinity immunoglobulin gamma Fc receptor I, IgG Fc receptor I, Fc-gamma RI, FcRI, Fc-gamma RIA, FcgammaRIa, CD64, FCGR1A, FCG1, FCGR1, IGFR1
Target/Specificity	This FCGR1A antibody is generated from a rabbit immunized with a KLH conjugated synthetic peptide between 168-200 amino acids from the Central region of human FCGR1A.
Dilution	WB~~1:8000 E~~Use at an assay dependent concentration.
Format	Purified polyclonal antibody supplied in PBS with 0.09% (W/V) sodium azide. This antibody is purified through a protein A column, followed by peptide affinity purification.
Storage	Maintain refrigerated at 2-8°C for up to 2 weeks. For long term storage store at -20°C in small aliquots to prevent freeze-thaw cycles.
Precautions	FCGR1A Antibody (Center) is for research use only and not for use in diagnostic or therapeutic procedures.

## Protein Information

---

Name	FCGR1A
Synonyms	FCG1, FCGR1, IGFR1
Function	High affinity receptor for the Fc region of immunoglobulins gamma. Functions in both innate and adaptive immune responses. Mediates IgG

effector functions on monocytes triggering antibody-dependent cellular cytotoxicity (ADCC) of virus-infected cells.

#### Cellular Location

Cell membrane; Single-pass type I membrane protein Note=Stabilized at the cell membrane through interaction with FCER1G

#### Tissue Location

Monocyte/macrophage specific.

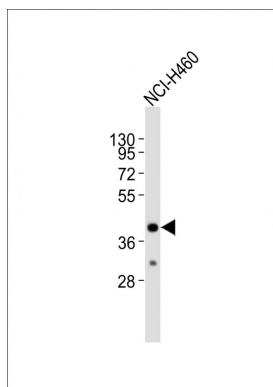
## Background

High affinity receptor for the Fc region of immunoglobulins gamma. Functions in both innate and adaptive immune responses.

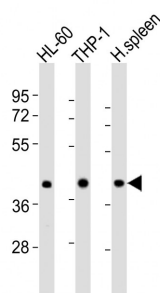
## References

Allen J.M.,et al.Nucleic Acids Res. 16:11824-11824(1988).  
Allen J.M.,et al.Science 243:378-381(1989).  
Porges A.J.,et al.J. Clin. Invest. 90:2102-2109(1992).  
Benech P.D.,et al.J. Exp. Med. 176:1115-1123(1992).  
Gregory S.G.,et al.Nature 441:315-321(2006).

## Images



Anti-FCGR1A Antibody (Center)at 1:2000 dilution + NCI-H460 whole cell lysates Lysates/proteins at 20 µg per lane. Secondary Goat Anti-Rabbit IgG, (H+L), Peroxidase conjugated at 1/10000 dilution Predicted band size : 43 kDa Blocking/Dilution buffer: 5% NFDM/TBST.



All lanes : Anti-FCGR1A Antibody (Center) at 1:8000 dilution Lane 1: HL-60 whole cell lysates Lane 2: THP-1 whole cell lysates Lane 3: human spleen lysates Lysates/proteins at 20 µg per lane. Secondary Goat Anti-Rabbit IgG, (H+L), Peroxidase conjugated at 1/10000 dilution Predicted band size : 43 kDa Blocking/Dilution buffer: 5% NFDM/TBST.

Please note: All products are 'FOR RESEARCH USE ONLY. NOT FOR USE IN DIAGNOSTIC OR THERAPEUTIC PROCEDURES'.