

RAB11FIP5 Antibody (Center)

Purified Rabbit Polyclonal Antibody (Pab)

Catalog # AP21450c

Product Information

Application	WB, E
Primary Accession	Q9BXF6
Reactivity	Human, Mouse
Host	Rabbit
Clonality	polyclonal
Isotype	Rabbit IgG
Clone Names	RB52916
Calculated MW	70415

Additional Information

Gene ID	26056
Other Names	Rab11 family-interacting protein 5, Rab11-FIP5, Gamma-SNAP-associated factor 1, Gaf-1, Phosphoprotein pp75, Rab11-interacting protein Rip11, RAB11FIP5, GAF1, KIAA0857, RIP11
Target/Specificity	This RAB11FIP5 antibody is generated from a rabbit immunized with a KLH conjugated synthetic peptide between 341-375 amino acids from the Central region of human RAB11FIP5.
Dilution	WB~~1:2000 E~~Use at an assay dependent concentration.
Format	Purified polyclonal antibody supplied in PBS with 0.09% (W/V) sodium azide. This antibody is purified through a protein A column, followed by peptide affinity purification.
Storage	Maintain refrigerated at 2-8°C for up to 2 weeks. For long term storage store at -20°C in small aliquots to prevent freeze-thaw cycles.
Precautions	RAB11FIP5 Antibody (Center) is for research use only and not for use in diagnostic or therapeutic procedures.

Protein Information

Name	RAB11FIP5 (HGNC:24845)
Function	Rab effector involved in protein trafficking from apical recycling endosomes to the apical plasma membrane. Involved in insulin granule exocytosis. May regulate V-ATPase intracellular transport in response to extracellular acidosis.

Cellular Location	Cytoplasm. Recycling endosome membrane; Peripheral membrane protein. Early endosome membrane; Peripheral membrane protein. Golgi apparatus membrane; Peripheral membrane protein. Cytoplasmic vesicle, secretory vesicle membrane; Peripheral membrane protein. Mitochondrion membrane; Peripheral membrane protein
Tissue Location	Detected at low levels in heart, brain, placenta, lung, liver, adipocytes, kidney, spleen, skeletal muscle and pancreas

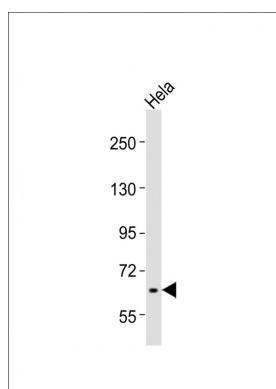
Background

Rab effector involved in protein trafficking from apical recycling endosomes to the apical plasma membrane. Involved in insulin granule exocytosis. May regulate V-ATPase intracellular transport in response to extracellular acidosis.

References

Prekeris R.,et al.Mol. Cell 6:1437-1448(2000).
Nagase T.,et al.DNA Res. 5:355-364(1998).
Wang D.,et al.J. Clin. Invest. 104:1265-1275(1999).
Chen D.,et al.J. Biol. Chem. 276:13127-13135(2001).
Wallace D.M.,et al.Biochem. Biophys. Res. Commun. 299:770-779(2002).

Images



Anti-RAB11FIP5 Antibody (Center) at 1:2000 dilution +
Hela whole cell lysates Lysates/proteins at 20 µg per lane.
Secondary Goat Anti-Rabbit IgG, (H+L), Peroxidase
conjugated at 1/10000 dilution Predicted band size : 70
kDa Blocking/Dilution buffer: 5% NFDM/TBST.

Please note: All products are 'FOR RESEARCH USE ONLY. NOT FOR USE IN DIAGNOSTIC OR THERAPEUTIC PROCEDURES'.