

SH3GL2 Antibody (Center)

Purified Rabbit Polyclonal Antibody (Pab)

Catalog # AP21451c

Product Information

Application	WB, E
Primary Accession	Q99962
Reactivity	Human
Host	Rabbit
Clonality	polyclonal
Isotype	Rabbit IgG
Clone Names	RB52936
Calculated MW	39962

Additional Information

Gene ID	6456
Other Names	Endophilin-A1, EEN-B1, Endophilin-1, SH3 domain protein 2A, SH3 domain-containing GRB2-like protein 2, SH3GL2, CNSA2, SH3D2A
Target/Specificity	This SH3GL2 antibody is generated from a rabbit immunized with a KLH conjugated synthetic peptide between 127-158 amino acids from the Central region of human SH3GL2.
Dilution	WB~~1:8000 E~~Use at an assay dependent concentration.
Format	Purified polyclonal antibody supplied in PBS with 0.09% (W/V) sodium azide. This antibody is purified through a protein A column, followed by peptide affinity purification.
Storage	Maintain refrigerated at 2-8°C for up to 2 weeks. For long term storage store at -20°C in small aliquots to prevent freeze-thaw cycles.
Precautions	SH3GL2 Antibody (Center) is for research use only and not for use in diagnostic or therapeutic procedures.

Protein Information

Name	SH3GL2
Synonyms	CNSA2, SH3D2A
Function	Implicated in synaptic vesicle endocytosis. May recruit other proteins to membranes with high curvature. Required for BDNF-dependent dendrite outgrowth. Cooperates with SH3GL2 to mediate BDNF-NTRK2 early endocytic

trafficking and signaling from early endosomes.

Cellular Location

Cytoplasm {ECO:0000250|UniProtKB:O35179}. Membrane {ECO:0000250|UniProtKB:O35179}; Peripheral membrane protein {ECO:0000250|UniProtKB:O35179}. Early endosome {ECO:0000250|UniProtKB:Q62420}. Presynapse {ECO:0000250|UniProtKB:O35179}

Tissue Location

Brain, mostly in frontal cortex. Expressed at high level in fetal cerebellum

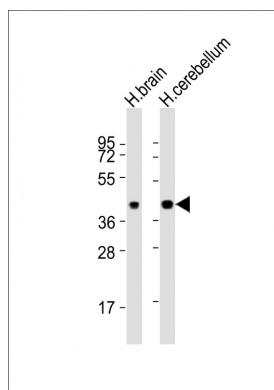
Background

Implicated in synaptic vesicle endocytosis. May recruit other proteins to membranes with high curvature.

References

Giachino C.,et al.Genomics 41:427-434(1997).
So C.W.,et al.Submitted (MAR-1998) to the EMBL/GenBank/DDBJ databases.
Halleck A.,et al.Submitted (JUN-2004) to the EMBL/GenBank/DDBJ databases.
Kalnine N.,et al.Submitted (OCT-2004) to the EMBL/GenBank/DDBJ databases.
Ota T.,et al.Nat. Genet. 36:40-45(2004).

Images



All lanes : Anti-SH3GL2 Antibody (Center) at 1:8000 dilution
Lane 1: human brain lysates
Lane 2: human cerebellum lysates
Lysates/proteins at 20 µg per lane.
Secondary Goat Anti-Rabbit IgG, (H+L), Peroxidase conjugated at 1/10000 dilution
Predicted band size : 40 kDa
Blocking/Dilution buffer: 5% NFDM/TBST.

Please note: All products are 'FOR RESEARCH USE ONLY. NOT FOR USE IN DIAGNOSTIC OR THERAPEUTIC PROCEDURES'.