

YY1AP1 Antibody (Center)

Purified Rabbit Polyclonal Antibody (Pab)

Catalog # AP21459c

Product Information

Application	WB, E
Primary Accession	Q9H869
Reactivity	Human
Host	Rabbit
Clonality	polyclonal
Isotype	Rabbit IgG
Clone Names	RB53831
Calculated MW	87944

Additional Information

Gene ID	55249
Other Names	YY1-associated protein 1, Hepatocellular carcinoma susceptibility protein, Hepatocellular carcinoma-associated protein 2, YY1AP1, HCCA2, YY1AP
Target/Specificity	This YY1AP1 antibody is generated from a rabbit immunized with a KLH conjugated synthetic peptide between 437-468 amino acids from the Central region of human YY1AP1.
Dilution	WB~~1:2000 E~~Use at an assay dependent concentration.
Format	Purified polyclonal antibody supplied in PBS with 0.09% (W/V) sodium azide. This antibody is purified through a protein A column, followed by peptide affinity purification.
Storage	Maintain refrigerated at 2-8°C for up to 2 weeks. For long term storage store at -20°C in small aliquots to prevent freeze-thaw cycles.
Precautions	YY1AP1 Antibody (Center) is for research use only and not for use in diagnostic or therapeutic procedures.

Protein Information

Name	YY1AP1 (HGNC:30935)
Function	Associates with the INO80 chromatin remodeling complex, which is responsible for transcriptional regulation, DNA repair, and replication (PubMed: 27939641). Enhances transcription activation by YY1 (PubMed: 14744866). Plays a role in cell cycle regulation (PubMed: 17541814 , PubMed: 27939641).

Cellular Location	Cytoplasm. Nucleus. Nucleus, nucleoplasm. Nucleus, nucleolus
Tissue Location	Ubiquitous. Detected in small intestine, skeletal muscle, lung, pancreas, brain, stomach, spleen, colon and heart Detected at very low levels in healthy liver. Highly expressed in most liver carcinomas.

Background

Enhances transcription activation by YY1. May play a role in cell cycle regulation.

References

Wang Z.-X.,et al.Br. J. Cancer Suppl. 85:1162-1167(2001).

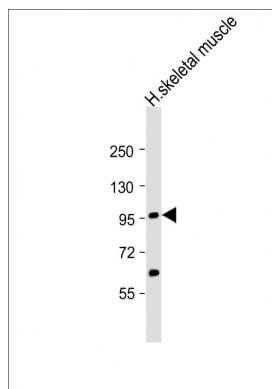
Wang C.-Y.,et al.J. Biol. Chem. 279:17750-17755(2004).

Zeng J.Z.,et al.Oncogene 21:4932-4943(2002).

Ota T.,et al.Nat. Genet. 36:40-45(2004).

Gregory S.G.,et al.Nature 441:315-321(2006).

Images



Anti-YY1AP1 Antibody (Center)at 1:2000 dilution + human skeletal muscle lysates Lysates/proteins at 20 µg per lane. Secondary Goat Anti-Rabbit IgG, (H+L), Peroxidase conjugated at 1/10000 dilution Predicted band size : 88 kDa Blocking/Dilution buffer: 5% NFDM/TBST.

Please note: All products are 'FOR RESEARCH USE ONLY. NOT FOR USE IN DIAGNOSTIC OR THERAPEUTIC PROCEDURES'.