

AQPEP Antibody (C-Term)

Purified Rabbit Polyclonal Antibody (Pab)

Catalog # AP21461b

Product Information

Application	WB, E
Primary Accession	Q6Q4G3
Reactivity	Human
Host	Rabbit
Clonality	polyclonal
Isotype	Rabbit IgG
Clone Names	RB52724
Calculated MW	113283

Additional Information

Gene ID	206338
Other Names	Aminopeptidase Q, AP-Q, 3411-, CHL2 antigen, Laeverin, AQPEP, LVRN
Target/Specificity	This AQPEP antibody is generated from a rabbit immunized with a KLH conjugated synthetic peptide between 844-877 amino acids from human AQPEP.
Dilution	WB~~1:2000 E~~Use at an assay dependent concentration.
Format	Purified polyclonal antibody supplied in PBS with 0.09% (W/V) sodium azide. This antibody is purified through a protein A column, followed by peptide affinity purification.
Storage	Maintain refrigerated at 2-8°C for up to 2 weeks. For long term storage store at -20°C in small aliquots to prevent freeze-thaw cycles.
Precautions	AQPEP Antibody (C-Term) is for research use only and not for use in diagnostic or therapeutic procedures.

Protein Information

Name	LVRN (HGNC:26904)
Function	Metalloprotease which may be important for placentation by regulating biological activity of key peptides at the embryo-maternal interface. On synthetic substrates it shows a marked preference for Leu-4-methylcoumaryl-7-amide (Leu-MCA) over Met-MCA, Arg-LCA and Lys-LCA. Cleaves the N-terminal amino acid of several peptides such as angiotensin-3, kisspeptin-10 and endokinin C.

Cellular Location	Membrane; Single- pass type II membrane protein
Tissue Location	Specifically expressed in placenta and not in other tissues. Mainly found at the cell surface region of the extravillous trophoblasts. Detected on extravillous trophoblasts in the outer layer of the chorion laeve in the fetal membrane Not detected on either fetal amnionic epithelial cells or maternal decidual cells. Also detected in the migrating extravillous trophoblasts in the maternal decidual tissues (at protein level).

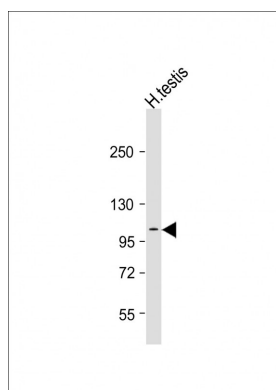
Background

Metalloprotease which may be important for placentation by regulating biological activity of key peptides at the embryo- maternal interface. On synthetic substrates it shows a marked preference for Leu-4-methylcoumaryl-7-amide (Leu-MCA) over Met- MCA, Arg-LCA and Lys-LCA. Cleaves the N-terminal amino acid of several peptides such as angiotensin-3, kisspeptin-10 and endokinin C.

References

Fujiwara H.,et al.Biochem. Biophys. Res. Commun. 313:962-968(2004).
Ota T.,et al.Nat. Genet. 36:40-45(2004).
Schmutz J.,et al.Nature 431:268-274(2004).
Mural R.J.,et al.Submitted (SEP-2005) to the EMBL/GenBank/DDBJ databases.
Maruyama M.,et al.J. Biol. Chem. 282:20088-20096(2007).

Images



Anti-AQPEP Antibody (C-Term)at 1:2000 dilution + human testis lysates Lysates/proteins at 20 µg per lane.
Secondary Goat Anti-Rabbit IgG, (H+L), Peroxidase conjugated at 1/10000 dilution Predicted band size : 113 kDa Blocking/Dilution buffer: 5% NFDM/TBST.

Please note: All products are 'FOR RESEARCH USE ONLY. NOT FOR USE IN DIAGNOSTIC OR THERAPEUTIC PROCEDURES'.