

# CAPN2 Antibody (N-Term)

Purified Rabbit Polyclonal Antibody (Pab)

Catalog # AP21462a

## Product Information

---

<b>Application</b>	WB, E
<b>Primary Accession</b>	<a href="#">P17655</a>
<b>Reactivity</b>	Human, Rat, Mouse
<b>Host</b>	Rabbit
<b>Clonality</b>	polyclonal
<b>Isotype</b>	Rabbit IgG
<b>Clone Names</b>	RB52878
<b>Calculated MW</b>	79995

## Additional Information

---

<b>Gene ID</b>	824
<b>Other Names</b>	Calpain-2 catalytic subunit, Calcium-activated neutral proteinase 2, CANP 2, Calpain M-type, Calpain large polypeptide L2, Calpain-2 large subunit, Millimolar-calpain, M-calpain, CAPN2, CANPL2
<b>Target/Specificity</b>	This CAPN2 antibody is generated from a rabbit immunized with a KLH conjugated synthetic peptide between 10-43 amino acids from human CAPN2.
<b>Dilution</b>	WB~~1:8000 E~~Use at an assay dependent concentration.
<b>Format</b>	Purified polyclonal antibody supplied in PBS with 0.09% (W/V) sodium azide. This antibody is purified through a protein A column, followed by peptide affinity purification.
<b>Storage</b>	Maintain refrigerated at 2-8°C for up to 2 weeks. For long term storage store at -20°C in small aliquots to prevent freeze-thaw cycles.
<b>Precautions</b>	CAPN2 Antibody (N-Term) is for research use only and not for use in diagnostic or therapeutic procedures.

## Protein Information

---

<b>Name</b>	CAPN2
<b>Synonyms</b>	CANPL2
<b>Function</b>	Calcium-regulated non-lysosomal thiol-protease which catalyzes limited proteolysis of substrates involved in cytoskeletal remodeling and signal transduction. Proteolytically cleaves MYOC at 'Arg-226' (PubMed: <a href="#">17650508</a> ).

Proteolytically cleaves CPEB3 following neuronal stimulation which abolishes CPEB3 translational repressor activity, leading to translation of CPEB3 target mRNAs (By similarity).

**Cellular Location**

Cytoplasm. Cell membrane. Note=Translocates to the plasma membrane upon Ca(2+) binding

**Tissue Location**

Ubiquitous.

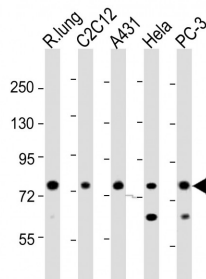
## Background

Calcium-regulated non-lysosomal thiol-protease which catalyze limited proteolysis of substrates involved in cytoskeletal remodeling and signal transduction. Proteolytically cleaves MYOC at 'Arg-226' (PubMed:[17650508](#)).

## References

Imajoh S.,et al.Biochemistry 27:8122-8128(1988).  
Ye Z.,et al.Biochem. Biophys. Res. Commun. 275:223-227(2000).  
Ota T.,et al.Nat. Genet. 36:40-45(2004).  
Gregory S.G.,et al.Nature 441:315-321(2006).  
Hata A.,et al.J. Biol. Chem. 264:6404-6411(1989).

## Images



All lanes : Anti-CAPN2 Antibody (N-Term) at 1:8000 dilution Lane 1: rat lung lysates Lane 2: C2C12 whole cell lysates Lane 3: A431 whole cell lysates Lane 4: Hela whole cell lysates Lane 5: PC-3 whole cell lysates Lysates/proteins at 20 µg per lane. Secondary Goat Anti-Rabbit IgG, (H+L), Peroxidase conjugated at 1/10000 dilution Predicted band size : 80 kDa Blocking/Dilution buffer: 5% NFDM/TBST.

Please note: All products are 'FOR RESEARCH USE ONLY. NOT FOR USE IN DIAGNOSTIC OR THERAPEUTIC PROCEDURES'.