

# CAPN2 Antibody (Center)

Purified Rabbit Polyclonal Antibody (Pab)

Catalog # AP21463c

## Product Information

---

<b>Application</b>	WB, E
<b>Primary Accession</b>	<a href="#">P17655</a>
<b>Reactivity</b>	Human
<b>Host</b>	Rabbit
<b>Clonality</b>	polyclonal
<b>Isotype</b>	Rabbit IgG
<b>Clone Names</b>	RB52877

## Additional Information

---

<b>Other Names</b>	Calpain-2 catalytic subunit, Calcium-activated neutral proteinase 2, CANP 2, Calpain M-type, Calpain large polypeptide L2, Calpain-2 large subunit, Millimolar-calpain, M-calpain, CAPN2, CANPL2
<b>Target/Specificity</b>	This CAPN2 antibody is generated from a rabbit immunized with a KLH conjugated synthetic peptide between 301-335 amino acids from the Central region of human CAPN2.
<b>Dilution</b>	WB~~1:2000 E~~Use at an assay dependent concentration.
<b>Format</b>	Purified polyclonal antibody supplied in PBS with 0.05% (V/V) Proclin 300. This antibody is purified through a protein A column, followed by peptide affinity purification.
<b>Storage</b>	Maintain refrigerated at 2-8°C for up to 2 weeks. For long term storage store at -20°C in small aliquots to prevent freeze-thaw cycles.
<b>Precautions</b>	CAPN2 Antibody (Center) is for research use only and not for use in diagnostic or therapeutic procedures.

## Protein Information

---

### Background

---

Calcium-regulated non-lysosomal thiol-protease which catalyze limited proteolysis of substrates involved in cytoskeletal remodeling and signal transduction. Proteolytically cleaves MYOC at 'Arg-226' (PubMed:[17650508](#)).

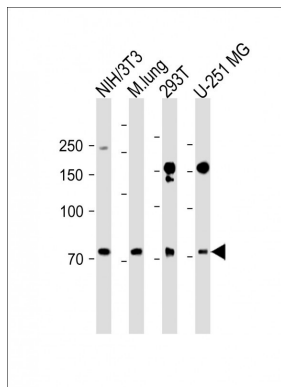
### References

---

Imajoh S.,et al.Biochemistry 27:8122-8128(1988).  
Ye Z.,et al.Biochem. Biophys. Res. Commun. 275:223-227(2000).  
Ota T.,et al.Nat. Genet. 36:40-45(2004).  
Gregory S.G.,et al.Nature 441:315-321(2006).  
Hata A.,et al.J. Biol. Chem. 264:6404-6411(1989).

## Images

---



All lanes: Anti-CAPN2 Antibody (Center) at 1:1000 dilution  
Lane 1: NIH/3T3 whole cell lysate Lane 2: Mouse lung lysate Lane 3: 293T whole cell lysate Lane 4: U-251 MG whole cell lysate Lysates/proteins at 20  $\mu$ g per lane.  
Secondary: Goat Anti-Rabbit IgG, (H+L), Peroxidase conjugated (ASP1615) at 1/15000 dilution. Observed band size: 75 KDa Blocking/Dilution buffer: 5% NFDM/TBST.

## Citations

---

- [Calpain-Calcineurin-Nuclear Factor Signaling and the Development of Atrial Fibrillation in Patients with Valvular Heart Disease and Diabetes.](#)

Please note: All products are 'FOR RESEARCH USE ONLY. NOT FOR USE IN DIAGNOSTIC OR THERAPEUTIC PROCEDURES'.