

SH3GL2 Antibody (C-term)

Purified Rabbit Polyclonal Antibody (Pab)

Catalog # AP21467b

Product Information

| | |
|--------------------------|------------------------|
| Application | WB, E |
| Primary Accession | Q99962 |
| Reactivity | Human, Rat, Mouse |
| Host | Rabbit |
| Clonality | polyclonal |
| Isotype | Rabbit IgG |
| Clone Names | RB52937 |
| Calculated MW | 39962 |

Additional Information

| | |
|---------------------------|--|
| Gene ID | 6456 |
| Other Names | Endophilin-A1, EEN-B1, Endophilin-1, SH3 domain protein 2A, SH3 domain-containing GRB2-like protein 2, SH3GL2, CNSA2, SH3D2A |
| Target/Specificity | This SH3GL2 antibody is generated from a rabbit immunized with a KLH conjugated synthetic peptide between 245-279 amino acids from the C-terminal region of human SH3GL2. |
| Dilution | WB~~1:2000 E~~Use at an assay dependent concentration. |
| Format | Purified polyclonal antibody supplied in PBS with 0.09% (W/V) sodium azide. This antibody is purified through a protein A column, followed by peptide affinity purification. |
| Storage | Maintain refrigerated at 2-8°C for up to 2 weeks. For long term storage store at -20°C in small aliquots to prevent freeze-thaw cycles. |
| Precautions | SH3GL2 Antibody (C-term) is for research use only and not for use in diagnostic or therapeutic procedures. |

Protein Information

| | |
|-----------------|---|
| Name | SH3GL2 |
| Synonyms | CNSA2, SH3D2A |
| Function | Implicated in synaptic vesicle endocytosis. May recruit other proteins to membranes with high curvature. Required for BDNF-dependent dendrite outgrowth. Cooperates with SH3GL2 to mediate BDNF-NTRK2 early endocytic |

trafficking and signaling from early endosomes.

Cellular Location

Cytoplasm {ECO:0000250|UniProtKB:O35179}. Membrane {ECO:0000250|UniProtKB:O35179}; Peripheral membrane protein {ECO:0000250|UniProtKB:O35179}. Early endosome {ECO:0000250|UniProtKB:Q62420}. Presynapse {ECO:0000250|UniProtKB:O35179}

Tissue Location

Brain, mostly in frontal cortex. Expressed at high level in fetal cerebellum

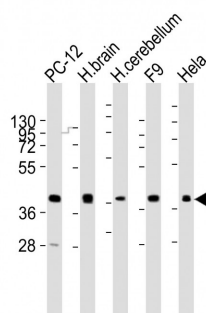
Background

Implicated in synaptic vesicle endocytosis. May recruit other proteins to membranes with high curvature.

References

Giachino C.,et al.Genomics 41:427-434(1997).
So C.W.,et al.Submitted (MAR-1998) to the EMBL/GenBank/DDBJ databases.
Halleck A.,et al.Submitted (JUN-2004) to the EMBL/GenBank/DDBJ databases.
Kalnine N.,et al.Submitted (OCT-2004) to the EMBL/GenBank/DDBJ databases.
Ota T.,et al.Nat. Genet. 36:40-45(2004).

Images



All lanes : Anti-SH3GL2 Antibody (C-term) at 1:2000 dilution
Lane 1: PC-12 whole cell lysates
Lane 2: human brain lysates
Lane 3: human cerebellum lysates
Lane 4: F9 whole cell lysates
Lane 5: Hela whole cell lysates
Lysates/proteins at 20 µg per lane. Secondary Goat Anti-Rabbit IgG, (H+L), Peroxidase conjugated at 1/10000 dilution
Predicted band size : 40 kDa
Blocking/Dilution buffer: 5% NFDM/TBST.

Please note: All products are 'FOR RESEARCH USE ONLY. NOT FOR USE IN DIAGNOSTIC OR THERAPEUTIC PROCEDURES'.