

MAML2 Antibody (Center)

Purified Rabbit Polyclonal Antibody (Pab)

Catalog # AP21469c

Product Information

Application	WB, IHC-P, E
Primary Accession	Q8IZL2
Reactivity	Human
Host	Rabbit
Clonality	polyclonal
Isotype	Rabbit IgG
Clone Names	RB52651
Calculated MW	125197

Additional Information

Gene ID	84441
Other Names	Mastermind-like protein 2, Mam-2, MAML2, KIAA1819
Target/Specificity	This MAML2 antibody is generated from a rabbit immunized with a KLH conjugated synthetic peptide between 780-814 amino acids from the Central region of human MAML2.
Dilution	WB~~1:2000 IHC-P~~1:100~500 E~~Use at an assay dependent concentration.
Format	Purified polyclonal antibody supplied in PBS with 0.09% (W/V) sodium azide. This antibody is purified through a protein A column, followed by peptide affinity purification.
Storage	Maintain refrigerated at 2-8°C for up to 2 weeks. For long term storage store at -20°C in small aliquots to prevent freeze-thaw cycles.
Precautions	MAML2 Antibody (Center) is for research use only and not for use in diagnostic or therapeutic procedures.

Protein Information

Name	MAML2
Synonyms	KIAA1819
Function	Acts as a transcriptional coactivator for NOTCH proteins. Has been shown to amplify NOTCH-induced transcription of HES1. Potentiates activation by NOTCH3 and NOTCH4 more efficiently than MAML1 or MAML3.

Cellular Location

Nucleus speckle. Note=Nuclear, in a punctate manner

Tissue Location

Widely expressed with high levels detected in placenta, salivary gland and skeletal muscle

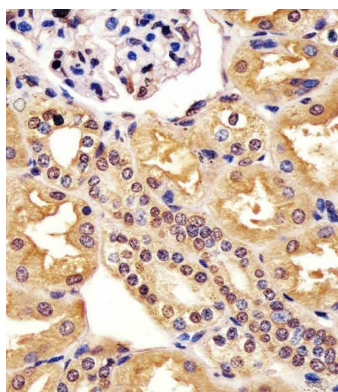
Background

Acts as a transcriptional coactivator for NOTCH proteins. Has been shown to amplify NOTCH-induced transcription of HES1. Potentiates activation by NOTCH3 and NOTCH4 more efficiently than MAML1 or MAML3.

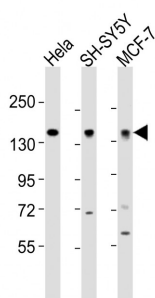
References

Tonon G.,et al.Nat. Genet. 33:208-213(2003).
Tonon G.,et al.Nat. Genet. 33:408-408(2003).
Nagase T.,et al.DNA Res. 8:85-95(2001).
Taylor T.D.,et al.Nature 440:497-500(2006).
Enlund F.,et al.Exp. Cell Res. 292:21-28(2004).

Images



AP21469c staining MAML2 in human kidney tissue sections by Immunohistochemistry (IHC-P - paraformaldehyde-fixed, paraffin-embedded sections). Tissue was fixed with formaldehyde and blocked with 3% BSA for 0.5 hour at room temperature; antigen retrieval was by heat mediation with a citrate buffer (pH6). Samples were incubated with primary antibody (1/25) for 1 hours at 37°C. A undiluted biotinylated goat polyvalent antibody was used as the secondary antibody.



All lanes : Anti-MAML2 Antibody (Center) at 1:2000 dilution Lane 1: HeLa whole cell lysates Lane 2: SH-SY5Y whole cell lysates Lane 3: MCF-7 whole cell lysates Lysates/proteins at 20 µg per lane. Secondary Goat Anti-Rabbit IgG, (H+L), Peroxidase conjugated at 1/10000 dilution Predicted band size : 125 kDa Blocking/Dilution buffer: 5% NFDM/TBST.

Please note: All products are 'FOR RESEARCH USE ONLY. NOT FOR USE IN DIAGNOSTIC OR THERAPEUTIC PROCEDURES'.