

## (Mouse) Bmi1 Antibody (Center)

Purified Rabbit Polyclonal Antibody (Pab)

Catalog # AP21471c

### Product Information

---

<b>Application</b>	WB, E
<b>Primary Accession</b>	<a href="#">P25916</a>
<b>Reactivity</b>	Human, Mouse
<b>Host</b>	Rabbit
<b>Clonality</b>	polyclonal
<b>Isotype</b>	Rabbit IgG
<b>Clone Names</b>	RB52338
<b>Calculated MW</b>	36708

### Additional Information

---

<b>Gene ID</b>	12151
<b>Other Names</b>	Polycomb complex protein BMI-1, Polycomb group RING finger protein 4, Bmi1, Bmi-1, Pcgf4
<b>Target/Specificity</b>	This Mouse Bmi1 antibody is generated from a rabbit immunized with a KLH conjugated synthetic peptide between 109-143 amino acids from the Central region of Mouse Bmi1.
<b>Dilution</b>	WB~~1:2000 E~~Use at an assay dependent concentration.
<b>Format</b>	Purified polyclonal antibody supplied in PBS with 0.09% (W/V) sodium azide. This antibody is purified through a protein A column, followed by peptide affinity purification.
<b>Storage</b>	Maintain refrigerated at 2-8°C for up to 2 weeks. For long term storage store at -20°C in small aliquots to prevent freeze-thaw cycles.
<b>Precautions</b>	(Mouse) Bmi1 Antibody (Center) is for research use only and not for use in diagnostic or therapeutic procedures.

### Protein Information

---

<b>Name</b>	Bmi1
<b>Synonyms</b>	Bmi-1, Pcgf4
<b>Function</b>	Component of a Polycomb group (PcG) multiprotein PRC1-like complex, a complex class required to maintain the transcriptionally repressive state of many genes, including Hox genes, throughout development. PcG PRC1

complex acts via chromatin remodeling and modification of histones; it mediates monoubiquitination of histone H2A 'Lys-119', rendering chromatin heritably changed in its expressibility. The complex composed of RNF2, UB2D3 and BMI1 binds nucleosomes, and has activity only with nucleosomal histone H2A. In the PRC1-like complex, regulates the E3 ubiquitin-protein ligase activity of RNF2/RING2 (By similarity).

#### Cellular Location

Nucleus {ECO:0000250|UniProtKB:P35226}. Cytoplasm {ECO:0000250|UniProtKB:P35226}

#### Tissue Location

Detected in most organs with high expression levels in thymus, heart, brain and testis

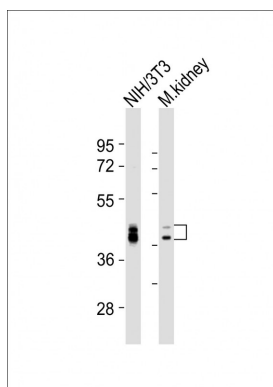
## Background

Component of a Polycomb group (PcG) multiprotein PRC1- like complex, a complex class required to maintain the transcriptionally repressive state of many genes, including Hox genes, throughout development. PcG PRC1 complex acts via chromatin remodeling and modification of histones; it mediates monoubiquitination of histone H2A 'Lys-119', rendering chromatin heritably changed in its expressibility. In the PRC1 complex, it is required to stimulate the E3 ubiquitin-protein ligase activity of RNF2/RING2 (By similarity).

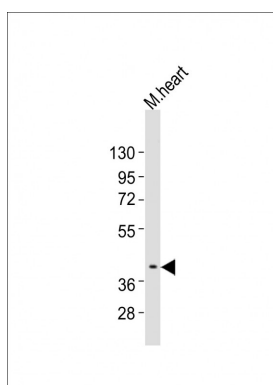
## References

Haupt Y.,et al.Cell 65:753-763(1991).  
van Lohuizen M.,et al.Cell 65:737-752(1991).  
Cao R.,et al.Mol. Cell 20:845-854(2005).  
Buchwald G.,et al.EMBO J. 25:2465-2474(2006).

## Images



All lanes : Anti-Bmi1 Antibody (Center) at 1:2000 dilution  
Lane 1: NIH/3T3 whole cell lysates Lane 2: mouse kidney lysates  
Lysates/proteins at 20 µg per lane. Secondary Goat Anti-Rabbit IgG, (H+L), Peroxidase conjugated at 1/10000 dilution  
Predicted band size : 37 kDa  
Blocking/Dilution buffer: 5% NFDm/TBST.



Anti-Bmi1 Antibody (Center)at 1:2000 dilution + mouse heart lysates  
Lysates/proteins at 20 µg per lane. Secondary Goat Anti-Rabbit IgG, (H+L), Peroxidase conjugated at 1/10000 dilution  
Predicted band size : 37 kDa  
Blocking/Dilution buffer: 5% NFDm/TBST.

Please note: All products are 'FOR RESEARCH USE ONLY. NOT FOR USE IN DIAGNOSTIC OR THERAPEUTIC PROCEDURES'.