

CTAGE6P Antibody (C-term)

Purified Rabbit Polyclonal Antibody (Pab)

Catalog # AP21478b

Product Information

Application	WB, E
Primary Accession	Q86UF2
Reactivity	Human
Host	Rabbit
Clonality	polyclonal
Isotype	Rabbit IgG
Clone Names	RB49586
Calculated MW	87900

Additional Information

Gene ID	340307
Other Names	cTAGE family member 6, Protein cTAGE-6, CTAGE6, CTAGE6P
Target/Specificity	This CTAGE6P antibody is generated from a rabbit immunized with a KLH conjugated synthetic peptide between 581-615 amino acids from the C-terminal region of human CTAGE6P.
Dilution	WB~~1:2000 E~~Use at an assay dependent concentration.
Format	Purified polyclonal antibody supplied in PBS with 0.05% (V/V) Proclin 300. This antibody is purified through a protein A column, followed by peptide affinity purification.
Storage	Maintain refrigerated at 2-8°C for up to 2 weeks. For long term storage store at -20°C in small aliquots to prevent freeze-thaw cycles.
Precautions	CTAGE6P Antibody (C-term) is for research use only and not for use in diagnostic or therapeutic procedures.

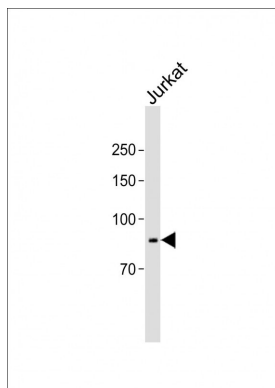
Protein Information

Name	CTAGE6
Synonyms	CTAGE6P
Cellular Location	Membrane; Single-pass membrane protein

References

Hillier L.W.,et al.Nature 424:157-164(2003).

Images



All lanes: Anti-CTAGE6P Antibody (C-term) at 1:1000 dilution + Jurkat whole cell lysate Lysates/proteins at 20 µg per lane. Secondary: Goat Anti-Rabbit IgG, (H+L), Peroxidase conjugated (ASP1615) at 1/15000 dilution. Observed band size: 88 KDa Blocking/Dilution buffer: 5% NFDM/TBST.

Please note: All products are 'FOR RESEARCH USE ONLY. NOT FOR USE IN DIAGNOSTIC OR THERAPEUTIC PROCEDURES'.