

RASSF2 Antibody (Center)

Purified Rabbit Polyclonal Antibody (Pab)

Catalog # AP21484c

Product Information

Application	WB, E
Primary Accession	P50749
Reactivity	Human, Rat, Mouse
Host	Rabbit
Clonality	polyclonal
Isotype	Rabbit IgG
Clone Names	RB53808
Calculated MW	37790

Additional Information

Gene ID	9770
Other Names	Ras association domain-containing protein 2, RASSF2, KIAA0168
Target/Specificity	This RASSF2 antibody is generated from a rabbit immunized with a KLH conjugated synthetic peptide between 123-156 amino acids from the Central region of human RASSF2.
Dilution	WB~~1:2000 E~~Use at an assay dependent concentration.
Format	Purified polyclonal antibody supplied in PBS with 0.09% (W/V) sodium azide. This antibody is purified through a protein A column, followed by peptide affinity purification.
Storage	Maintain refrigerated at 2-8°C for up to 2 weeks. For long term storage store at -20°C in small aliquots to prevent freeze-thaw cycles.
Precautions	RASSF2 Antibody (Center) is for research use only and not for use in diagnostic or therapeutic procedures.

Protein Information

Name	RASSF2
Synonyms	CENP-34 {ECO:0000303 PubMed:20813266}, K
Function	Potential tumor suppressor. Acts as a KRAS-specific effector protein. May promote apoptosis and cell cycle arrest. Stabilizes STK3/MST2 by protecting it from proteasomal degradation.

Cellular Location	Nucleus. Cytoplasm. Chromosome, centromere, kinetochore. Note=Translocates to the cytoplasm in the presence of STK3/MST2 and STK4/MST1
Tissue Location	Widely expressed with highest levels in brain, placenta, peripheral blood and lung. Frequently down-regulated in lung tumor cell lines.

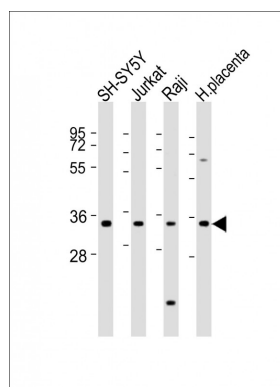
Background

Potential tumor suppressor. Acts as a KRAS-specific effector protein. May promote apoptosis and cell cycle arrest. Stabilizes STK3/MST2 by protecting it from proteasomal degradation.

References

Burbee D.G.,et al.Submitted (SEP-2002) to the EMBL/GenBank/DDBJ databases.
Nagase T.,et al.DNA Res. 3:17-24(1996).
Ota T.,et al.Nat. Genet. 36:40-45(2004).
Suzuki Y.,et al.Submitted (APR-2005) to the EMBL/GenBank/DDBJ databases.
Bechtel S.,et al.BMC Genomics 8:399-399(2007).

Images



All lanes : Anti-RASSF2 Antibody (Center) at 1:2000 dilution
Lane 1: SH-SY5Y whole cell lysates
Lane 2: Jurkat whole cell lysates
Lane 3: Raji whole cell lysates
Lane 4: human placenta lysates
Lysates/proteins at 20 µg per lane.
Secondary Goat Anti-Rabbit IgG, (H+L), Peroxidase conjugated at 1/10000 dilution
Predicted band size : 38 kDa
Blocking/Dilution buffer: 5% NFDM/TBST.

Please note: All products are 'FOR RESEARCH USE ONLY. NOT FOR USE IN DIAGNOSTIC OR THERAPEUTIC PROCEDURES'.