

# C17orf80 Antibody (Center)

Purified Rabbit Polyclonal Antibody (Pab)

Catalog # AP21485c

## Product Information

---

Application	WB, E
Primary Accession	<a href="#">Q9BSJ5</a>
Reactivity	Human
Host	Rabbit
Clonality	polyclonal
Isotype	Rabbit IgG
Clone Names	RB53765
Calculated MW	67315

## Additional Information

---

Gene ID	55028
Other Names	Uncharacterized protein C17orf80, Cell migration-inducing gene 3 protein, Human lung cancer oncogene 8 protein, HLC-8, C17orf80
Target/Specificity	This C17orf80 antibody is generated from a rabbit immunized with a KLH conjugated synthetic peptide between 264-696 amino acids from the Central region of human C17orf80.
Dilution	WB~~1:1000-1:2000 E~~Use at an assay dependent concentration.
Format	Purified polyclonal antibody supplied in PBS with 0.09% (W/V) sodium azide. This antibody is purified through a protein A column, followed by peptide affinity purification.
Storage	Maintain refrigerated at 2-8°C for up to 2 weeks. For long term storage store at -20°C in small aliquots to prevent freeze-thaw cycles.
Precautions	C17orf80 Antibody (Center) is for research use only and not for use in diagnostic or therapeutic procedures.

## Protein Information

---

Name	MTNAP1 ( <a href="#">HGNC:29601</a> )
Function	Critical regulator of mitochondrial DNA (mtDNA) abundance (PubMed: <a href="#">37676315</a> ). Binds dsDNA throughout the mitochondrial genome without sequence specificity and controls mtDNA copy number by promoting its replication (PubMed: <a href="#">37676315</a> ). Also plays important roles in mitochondrial metabolism and cell proliferation (PubMed: <a href="#">37676315</a> ).

## Cellular Location

Mitochondrion inner membrane; Single-pass type I membrane protein.  
Mitochondrion matrix, mitochondrion nucleoid Note=Retained in nucleoids  
under mtDNA replication stress caused by ddC and EtBr.

## References

---

Kim J.W.,et al.Submitted (OCT-2002) to the EMBL/GenBank/DDBJ databases.

Wiemann S.,et al.Genome Res. 11:422-435(2001).

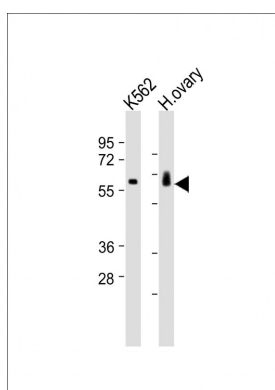
Ota T.,et al.Nat. Genet. 36:40-45(2004).

Zody M.C.,et al.Nature 440:1045-1049(2006).

Mural R.J.,et al.Submitted (JUL-2005) to the EMBL/GenBank/DDBJ databases.

## Images

---



All lanes : Anti-C17orf80 Antibody (Center) at  
1:1000-1:2000 dilution Lane 1: K562 whole cell lysates  
Lane 2: human ovary lysates Lysates/proteins at 20 µg  
per lane. Secondary Goat Anti-Rabbit IgG, (H+L),  
Peroxidase conjugated at 1/10000 dilution Predicted  
band size : 67 kDa Blocking/Dilution buffer: 5%  
NFDM/TBST.

Please note: All products are 'FOR RESEARCH USE ONLY. NOT FOR USE IN DIAGNOSTIC OR THERAPEUTIC PROCEDURES'.