

MYCL1 Antibody (C-Term)

Purified Rabbit Polyclonal Antibody (Pab)

Catalog # AP21488b

Product Information

Application	WB, E
Primary Accession	P12524
Reactivity	Human, Mouse
Host	Rabbit
Clonality	polyclonal
Isotype	Rabbit IgG
Clone Names	RB53775
Calculated MW	40327

Additional Information

Gene ID	4610
Other Names	Protein L-Myc, Class E basic helix-loop-helix protein 38, bHLHe38, Protein L-Myc-1, V-myc myelocytomatosis viral oncogene homolog, MYCL, BHLHE38, LMYC, MYCL1
Target/Specificity	This MYCL1 antibody is generated from a rabbit immunized with a KLH conjugated synthetic peptide between 271-303 amino acids from human MYCL1.
Dilution	WB~~1:2000 E~~Use at an assay dependent concentration.
Format	Purified polyclonal antibody supplied in PBS with 0.09% (W/V) sodium azide. This antibody is purified through a protein A column, followed by peptide affinity purification.
Storage	Maintain refrigerated at 2-8°C for up to 2 weeks. For long term storage store at -20°C in small aliquots to prevent freeze-thaw cycles.
Precautions	MYCL1 Antibody (C-Term) is for research use only and not for use in diagnostic or therapeutic procedures.

Protein Information

Name	MYCL
Synonyms	BHLHE38, LMYC, MYCL1
Cellular Location	Nucleus {ECO:0000255 PROSITE-ProRule:PRU00981, ECO:0000269 PubMed:2548855}

References

DePinho R.A.,et al.Genes Dev. 1:1311-1326(1987).

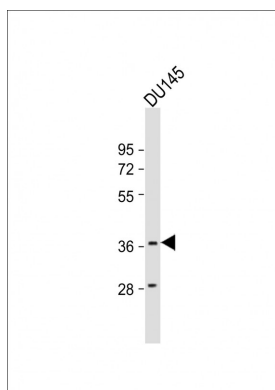
Kaye F.,et al.Mol. Cell. Biol. 8:186-195(1988).

Ota T.,et al.Nat. Genet. 36:40-45(2004).

Gregory S.G.,et al.Nature 441:315-321(2006).

Mural R.J.,et al.Submitted (SEP-2005) to the EMBL/GenBank/DDBJ databases.

Images



Anti-MYCL1 Antibody (C-Term)at 1:2000 dilution + DU145 whole cell lysates Lysates/proteins at 20 µg per lane. Secondary Goat Anti-Rabbit IgG, (H+L), Peroxidase conjugated at 1/10000 dilution Predicted band size : 40 kDa Blocking/Dilution buffer: 5% NFDM/TBST.

Please note: All products are 'FOR RESEARCH USE ONLY. NOT FOR USE IN DIAGNOSTIC OR THERAPEUTIC PROCEDURES'.