

# ETV1 Antibody (C-Term)

Purified Rabbit Polyclonal Antibody (Pab)

Catalog # AP21493b

## Product Information

---

Application	WB, E
Primary Accession	<a href="#">P50549</a>
Reactivity	Human, Mouse
Host	Rabbit
Clonality	polyclonal
Isotype	Rabbit IgG
Clone Names	RB53755
Calculated MW	55131

## Additional Information

---

Gene ID	2115
Other Names	ETS translocation variant 1, Ets-related protein 81, ETV1, ER81
Target/Specificity	This ETV1 antibody is generated from a rabbit immunized with a KLH conjugated synthetic peptide between 434-465 amino acids from human ETV1.
Dilution	WB~~1:2000 E~~Use at an assay dependent concentration.
Format	Purified polyclonal antibody supplied in PBS with 0.09% (W/V) sodium azide. This antibody is purified through a protein A column, followed by peptide affinity purification.
Storage	Maintain refrigerated at 2-8°C for up to 2 weeks. For long term storage store at -20°C in small aliquots to prevent freeze-thaw cycles.
Precautions	ETV1 Antibody (C-Term) is for research use only and not for use in diagnostic or therapeutic procedures.

## Protein Information

---

Name	ETV1 ( <a href="#">HGNC:3490</a> )
Function	Transcriptional activator that binds to DNA sequences containing the consensus pentanucleotide 5'-CGGA[AT]-3' (PubMed: <a href="#">7651741</a> ). Required for olfactory dopaminergic neuron differentiation; may directly activate expression of tyrosine hydroxylase (TH) (By similarity).
Cellular Location	Nucleus {ECO:0000255 PROSITE-ProRule:PRU00237}.

## Tissue Location

Very highly expressed in brain, highly expressed in testis, lung and heart, moderately in spleen, small intestine, pancreas and colon, weakly in liver, prostate and thymus, very weakly in skeletal muscle, kidney and ovary and not in placenta and peripheral blood leukocytes.

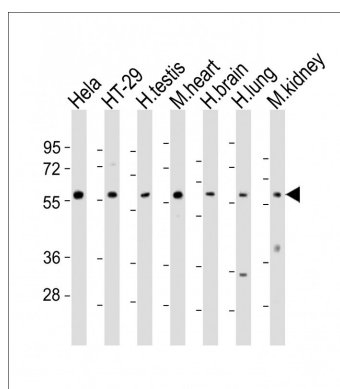
## Background

Transcriptional activator that binds to DNA sequences containing the consensus pentanucleotide 5'-CGGA[AT]-3'.

## References

Jeon I.-S.,et al.Oncogene 10:1229-1234(1995).  
Monte D.,et al.Oncogene 11:771-779(1995).  
Coutte L.,et al.Submitted (NOV-1998) to the EMBL/GenBank/DDBJ databases.  
Ota T.,et al.Nat. Genet. 36:40-45(2004).  
Totoki Y.,et al.Submitted (MAR-2005) to the EMBL/GenBank/DDBJ databases.

## Images



All lanes : Anti-ETV1 Antibody (C-Term) at 1:2000 dilution  
Lane 1: Hela whole cell lysates Lane 2: HT-29 whole cell lysates Lane 3: human testis lysates Lane 4: mouse heart lysates Lane 5: human brain lysates Lane 6: human lung lysates Lane 7: mouse kidney lysates Lysates/proteins at 20 µg per lane. Secondary Goat Anti-Rabbit IgG, (H+L), Peroxidase conjugated at 1/10000 dilution Predicted band size : 55 kDa Blocking/Dilution buffer: 5% NFDM/TBST.

Please note: All products are 'FOR RESEARCH USE ONLY. NOT FOR USE IN DIAGNOSTIC OR THERAPEUTIC PROCEDURES'.