

SLA2 Antibody (Center)

Purified Rabbit Polyclonal Antibody (Pab)

Catalog # AP21501c

Product Information

| | |
|--------------------------|------------------------|
| Application | WB, E |
| Primary Accession | Q9H6Q3 |
| Reactivity | Human, Mouse |
| Host | Rabbit |
| Clonality | polyclonal |
| Isotype | Rabbit IgG |
| Clone Names | RB53789 |
| Calculated MW | 28585 |

Additional Information

| | |
|---------------------------|--|
| Gene ID | 84174 |
| Other Names | Src-like-adapter 2, Modulator of antigen receptor signaling, MARS, Src-like adapter protein 2, SLAP-2, SLA2, C20orf156, SLAP2 |
| Target/Specificity | This SLA2 antibody is generated from a rabbit immunized with a KLH conjugated synthetic peptide between 138-169 amino acids from the Central region of human SLA2. |
| Dilution | WB~~1:2000 E~~Use at an assay dependent concentration. |
| Format | Purified polyclonal antibody supplied in PBS with 0.09% (W/V) sodium azide. This antibody is purified through a protein A column, followed by peptide affinity purification. |
| Storage | Maintain refrigerated at 2-8°C for up to 2 weeks. For long term storage store at -20°C in small aliquots to prevent freeze-thaw cycles. |
| Precautions | SLA2 Antibody (Center) is for research use only and not for use in diagnostic or therapeutic procedures. |

Protein Information

| | |
|-----------------|--|
| Name | SLA2 |
| Synonyms | C20orf156, SLAP2 |
| Function | Adapter protein, which negatively regulates T-cell receptor (TCR) signaling. Inhibits T-cell antigen-receptor induced activation of nuclear factor of activated T-cells. May act by linking signaling proteins such as ZAP70 with CBL, |

leading to a CBL dependent degradation of signaling proteins.

Cellular Location

Cytoplasm. [Isoform 2]: Cytoplasm. Note=May be cytoplasmic and is not localized to membranes

Tissue Location

Predominantly expressed in immune system, with highest levels in peripheral blood leukocytes. Expressed in spleen, thymus and lymph nodes. Expressed in T-cells as well as in monocytes, and at low level in B-cells. Also detected in placenta, prostate, skin, retina and colon

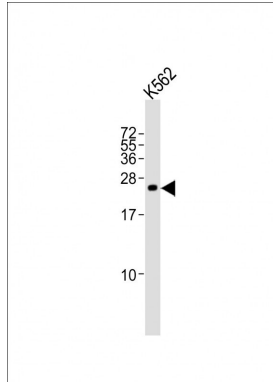
Background

Adapter protein, which negatively regulates T-cell receptor (TCR) signaling. Inhibits T-cell antigen-receptor induced activation of nuclear factor of activated T-cells. May act by linking signaling proteins such as ZAP70 with CBL, leading to a CBL dependent degradation of signaling proteins.

References

Holland S.J.,et al.J. Exp. Med. 194:1263-1276(2001).
Loreto M.P.,et al.Oncogene 22:266-273(2003).
Ota T.,et al.Nat. Genet. 36:40-45(2004).
Deloukas P.,et al.Nature 414:865-871(2001).
Mural R.J.,et al.Submitted (SEP-2005) to the EMBL/GenBank/DBJ databases.

Images



Anti-SLA2 Antibody (Center)at 1:2000 dilution + K562 whole cell lysates Lysates/proteins at 20 µg per lane. Secondary Goat Anti-Rabbit IgG, (H+L), Peroxidase conjugated at 1/10000 dilution Predicted band size : 29 kDa Blocking/Dilution buffer: 5% NFDM/TBST.

Please note: All products are 'FOR RESEARCH USE ONLY. NOT FOR USE IN DIAGNOSTIC OR THERAPEUTIC PROCEDURES'.