

# PPP2R5E Antibody (C-term)

Purified Rabbit Polyclonal Antibody (Pab)

Catalog # AP21502b

## Product Information

---

<b>Application</b>	WB, E
<b>Primary Accession</b>	<a href="#">Q16537</a>
<b>Reactivity</b>	Human, Mouse
<b>Host</b>	Rabbit
<b>Clonality</b>	polyclonal
<b>Isotype</b>	Rabbit IgG
<b>Clone Names</b>	RB51480
<b>Calculated MW</b>	54699

## Additional Information

---

<b>Gene ID</b>	5529
<b>Other Names</b>	Serine/threonine-protein phosphatase 2A 56 kDa regulatory subunit epsilon isoform, PP2A B subunit isoform B'-epsilon, PP2A B subunit isoform B56-epsilon, PP2A B subunit isoform PR61-epsilon, PP2A B subunit isoform R5-epsilon, PPP2R5E
<b>Target/Specificity</b>	This PPP2R5E antibody is generated from a rabbit immunized with a KLH conjugated synthetic peptide between 448-482 amino acids from the C-terminal region of human PPP2R5E.
<b>Dilution</b>	WB~~1:2000 E~~Use at an assay dependent concentration.
<b>Format</b>	Purified polyclonal antibody supplied in PBS with 0.09% (W/V) sodium azide. This antibody is purified through a protein A column, followed by peptide affinity purification.
<b>Storage</b>	Maintain refrigerated at 2-8°C for up to 2 weeks. For long term storage store at -20°C in small aliquots to prevent freeze-thaw cycles.
<b>Precautions</b>	PPP2R5E Antibody (C-term) is for research use only and not for use in diagnostic or therapeutic procedures.

## Protein Information

---

<b>Name</b>	PPP2R5E
<b>Function</b>	The B regulatory subunit might modulate substrate selectivity and catalytic activity, and might also direct the localization of the catalytic enzyme to a particular subcellular compartment.

## Background

---

The B regulatory subunit might modulate substrate selectivity and catalytic activity, and also might direct the localization of the catalytic enzyme to a particular subcellular compartment.

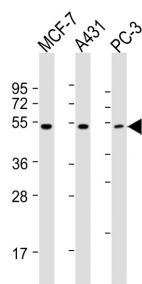
## References

---

Zolnierowicz S.,et al.Biochem. J. 317:187-194(1996).  
McCrigh B.,et al.J. Biol. Chem. 271:22081-22089(1996).  
Ota T.,et al.Nat. Genet. 36:40-45(2004).  
Heilig R.,et al.Nature 421:601-607(2003).  
Kitajima T.S.,et al.Nature 441:46-52(2006).

## Images

---



All lanes : Anti-PPP2R5E Antibody (C-term) at 1:2000 dilution Lane 1: MCF-7 whole cell lysates Lane 2: A431 whole cell lysates Lane 3: PC-3 whole cell lysates Lysates/proteins at 20 µg per lane. Secondary Goat Anti-Rabbit IgG, (H+L), Peroxidase conjugated at 1/10000 dilution Predicted band size : 55 kDa Blocking/Dilution buffer: 5% NFDM/TBST.

Please note: All products are 'FOR RESEARCH USE ONLY. NOT FOR USE IN DIAGNOSTIC OR THERAPEUTIC PROCEDURES'.