

# BCL9 Antibody (N-Term)

Purified Rabbit Polyclonal Antibody (Pab)

Catalog # AP21507a

## Product Information

---

<b>Application</b>	WB, IF, E
<b>Primary Accession</b>	<a href="#">O00512</a>
<b>Reactivity</b>	Human, Mouse
<b>Host</b>	Rabbit
<b>Clonality</b>	polyclonal
<b>Isotype</b>	Rabbit IgG
<b>Clone Names</b>	RB53769
<b>Calculated MW</b>	149290

## Additional Information

---

<b>Gene ID</b>	607
<b>Other Names</b>	B-cell CLL/lymphoma 9 protein, B-cell lymphoma 9 protein, Bcl-9, Protein legless homolog, BCL9
<b>Target/Specificity</b>	This BCL9 antibody is generated from a rabbit immunized with a KLH conjugated synthetic peptide between 272-304 amino acids from human BCL9.
<b>Dilution</b>	WB~~1:2000 IF~~1:25 E~~Use at an assay dependent concentration.
<b>Format</b>	Purified polyclonal antibody supplied in PBS with 0.09% (W/V) sodium azide. This antibody is purified through a protein A column, followed by peptide affinity purification.
<b>Storage</b>	Maintain refrigerated at 2-8°C for up to 2 weeks. For long term storage store at -20°C in small aliquots to prevent freeze-thaw cycles.
<b>Precautions</b>	BCL9 Antibody (N-Term) is for research use only and not for use in diagnostic or therapeutic procedures.

## Protein Information

---

<b>Name</b>	BCL9
<b>Function</b>	Involved in signal transduction through the Wnt pathway. Promotes beta-catenin's transcriptional activity (By similarity).
<b>Cellular Location</b>	Nucleus.

## Tissue Location

Detected at low levels in thymus, prostate, testis, ovary and small intestine, and at lower levels in spleen, colon and blood

## Background

Involved in signal transduction through the Wnt pathway. Promotes beta-catenin's transcriptional activity (By similarity).

## References

Willis T.G.,et al.Blood 91:1873-1881(1998).

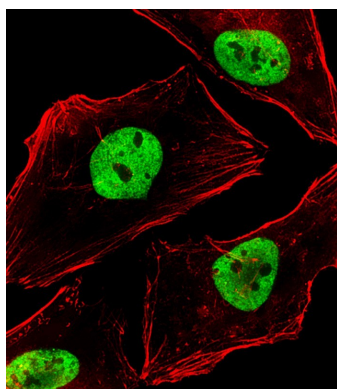
Gregory S.G.,et al.Nature 441:315-321(2006).

Mural R.J.,et al.Submitted (JUL-2005) to the EMBL/GenBank/DDBJ databases.

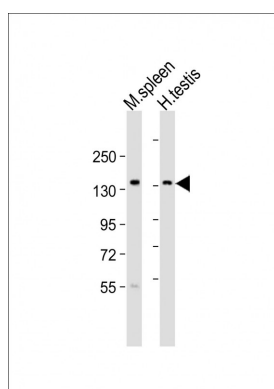
Kramps T.,et al.Cell 109:47-60(2002).

Matsuoka S.,et al.Science 316:1160-1166(2007).

## Images



Immunofluorescent analysis of 4% paraformaldehyde-fixed, 0.1% Triton X-100 permeabilized HeLa (human cervical epithelial adenocarcinoma cell line) cells labeling BCL9 with AP21507a at 1/25 dilution, followed by Dylight® 488-conjugated goat anti-rabbit IgG (NK179883) secondary antibody at 1/200 dilution (green). Immunofluorescence image showing nucleus staining on HeLa cell line. Cytoplasmic actin is detected with Dylight® 554 Phalloidin (PD18466410) at 1/100 dilution (red).



All lanes : Anti-BCL9 Antibody (N-Term) at 1:2000 dilution  
Lane 1: mouse spleen lysates Lane 2: human testis lysates  
Lysates/proteins at 20 µg per lane. Secondary Goat Anti-Rabbit IgG, (H+L), Peroxidase conjugated at 1/10000 dilution Predicted band size : 149 kDa Blocking/Dilution buffer: 5% NFDM/TBST.

Please note: All products are 'FOR RESEARCH USE ONLY. NOT FOR USE IN DIAGNOSTIC OR THERAPEUTIC PROCEDURES'.