

PLCG1 Antibody (Center)

Purified Rabbit Polyclonal Antibody (Pab)

Catalog # AP21509c

Product Information

| | |
|-------------------|------------------------|
| Application | WB, E |
| Primary Accession | P19174 |
| Reactivity | Human, Rat |
| Host | Rabbit |
| Clonality | polyclonal |
| Isotype | Rabbit IgG |
| Clone Names | RB53783 |
| Calculated MW | 148532 |

Additional Information

| | |
|--------------------|--|
| Gene ID | 5335 |
| Other Names | 1-phosphatidylinositol 4, 5-bisphosphate phosphodiesterase gamma-1, PLC-148, Phosphoinositide phospholipase C-gamma-1, Phospholipase C-II, PLC-II, Phospholipase C-gamma-1, PLC-gamma-1, PLCG1, PLC1 |
| Target/Specificity | This PLCG1 antibody is generated from a rabbit immunized with a KLH conjugated synthetic peptide between 456-488 amino acids from the Central region of human PLCG1. |
| Dilution | WB~~1:2000 E~~Use at an assay dependent concentration. |
| Format | Purified polyclonal antibody supplied in PBS with 0.09% (W/V) sodium azide. This antibody is purified through a protein A column, followed by peptide affinity purification. |
| Storage | Maintain refrigerated at 2-8°C for up to 2 weeks. For long term storage store at -20°C in small aliquots to prevent freeze-thaw cycles. |
| Precautions | PLCG1 Antibody (Center) is for research use only and not for use in diagnostic or therapeutic procedures. |

Protein Information

| | |
|----------|---|
| Name | PLCG1 (HGNC:9065) |
| Synonyms | PLC1 |
| Function | Mediates the production of the second messenger molecules diacylglycerol (DAG) and inositol 1,4,5-trisphosphate (IP3). Plays an important role in the |

regulation of intracellular signaling cascades. Becomes activated in response to ligand-mediated activation of receptor-type tyrosine kinases, such as PDGFRA, PDGFRB, EGFR, FGFR1, FGFR2, FGFR3 and FGFR4 (By similarity). Plays a role in actin reorganization and cell migration (PubMed:[17229814](#)). Guanine nucleotide exchange factor that binds the GTPase DNM1 and catalyzes the dissociation of GDP, allowing a GTP molecule to bind in its place, therefore enhancing DNM1-dependent endocytosis (By similarity).

Cellular Location

Cell projection, lamellipodium. Cell projection, ruffle. Note=Rapidly redistributed to ruffles and lamellipodia structures in response to epidermal growth factor (EGF) treatment.

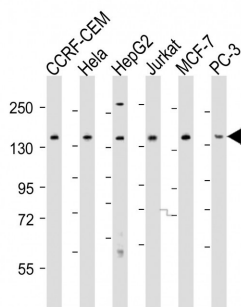
Background

Mediates the production of the second messenger molecules diacylglycerol (DAG) and inositol 1,4,5-trisphosphate (IP3). Plays an important role in the regulation of intracellular signaling cascades. Becomes activated in response to ligand-mediated activation of receptor-type tyrosine kinases, such as PDGFRA, PDGFRB, FGFR1, FGFR2, FGFR3 and FGFR4. Plays a role in actin reorganization and cell migration.

References

Burgess W.H.,et al.Mol. Cell. Biol. 10:4770-4777(1990).
Deloukas P.,et al.Nature 414:865-871(2001).
Mural R.J.,et al.Submitted (SEP-2005) to the EMBL/GenBank/DBJ databases.
Mohammadi M.,et al.Mol. Cell. Biol. 11:5068-5078(1991).
Park D.J.,et al.J. Biol. Chem. 267:1496-1501(1992).

Images



All lanes : Anti-PLCG1 Antibody (Center) at 1:2000 dilution
Lane 1: CCRF-CEM whole cell lysates Lane 2: HeLa whole cell lysates Lane 3: HepG2 whole cell lysates Lane 4: Jurkat whole cell lysates Lane 5: MCF-7 whole cell lysates Lane 6: PC-3 whole cell lysates Lysates/proteins at 20 µg per lane. Secondary Goat Anti-Rabbit IgG, (H+L), Peroxidase conjugated at 1/10000 dilution Predicted band size : 149 kDa Blocking/Dilution buffer: 5% NFDM/TBST.

Please note: All products are 'FOR RESEARCH USE ONLY. NOT FOR USE IN DIAGNOSTIC OR THERAPEUTIC PROCEDURES'.