

IQSEC2 Antibody (Center)

Purified Rabbit Polyclonal Antibody (Pab)

Catalog # AP21510c

Product Information

Application	WB, E
Primary Accession	Q5JU85
Reactivity	Human, Mouse
Host	Rabbit
Clonality	polyclonal
Isotype	Rabbit IgG
Clone Names	RB52674
Calculated MW	162784

Additional Information

Gene ID	23096
Other Names	IQ motif and SEC7 domain-containing protein 2, IQSEC2, KIAA0522
Target/Specificity	This IQSEC2 antibody is generated from a rabbit immunized with a KLH conjugated synthetic peptide between 451-484 amino acids from the Central region of human IQSEC2.
Dilution	WB~~1:2000 E~~Use at an assay dependent concentration.
Format	Purified polyclonal antibody supplied in PBS with 0.09% (W/V) sodium azide. This antibody is purified through a protein A column, followed by peptide affinity purification.
Storage	Maintain refrigerated at 2-8°C for up to 2 weeks. For long term storage store at -20°C in small aliquots to prevent freeze-thaw cycles.
Precautions	IQSEC2 Antibody (Center) is for research use only and not for use in diagnostic or therapeutic procedures.

Protein Information

Name	IQSEC2
Synonyms	KIAA0522
Function	Is a guanine nucleotide exchange factor for the ARF GTP- binding proteins.
Cellular Location	Cytoplasm.

Tissue Location

Expressed in brain, kidney and small intestine. Weakly expressed in placenta, pancreas, ovary, prostate and liver

References

Nagase T.,et al.DNA Res. 5:31-39(1998).

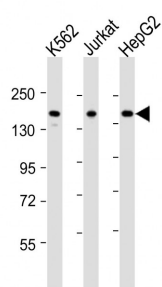
Ota T.,et al.Nat. Genet. 36:40-45(2004).

Ross M.T.,et al.Nature 434:325-337(2005).

Shapovalova Z.,et al.Submitted (AUG-2008) to the EMBL/GenBank/DDBJ databases.

Rigbolt K.T.,et al.Sci. Signal. 4:RS3-RS3(2011).

Images



All lanes : Anti-IQSEC2 Antibody (Center) at 1:2000 dilution Lane 1: K562 whole cell lysates Lane 2: Jurkat whole cell lysates Lane 3: HepG2 whole cell lysates Lysates/proteins at 20 µg per lane. Secondary Goat Anti-Rabbit IgG, (H+L), Peroxidase conjugated at 1/10000 dilution Predicted band size : 162 kDa Blocking/Dilution buffer: 5% NFDM/TBST.

Please note: All products are 'FOR RESEARCH USE ONLY. NOT FOR USE IN DIAGNOSTIC OR THERAPEUTIC PROCEDURES'.