

RBMX Antibody (Center)

Purified Rabbit Polyclonal Antibody (Pab)

Catalog # AP21511c

Product Information

Application	WB, IHC-P, E
Primary Accession	P38159
Reactivity	Human
Host	Rabbit
Clonality	polyclonal
Isotype	Rabbit IgG
Clone Names	RB53803
Calculated MW	42332

Additional Information

Gene ID	27316
Other Names	RNA-binding motif protein, X chromosome, Glycoprotein p43, Heterogeneous nuclear ribonucleoprotein G, hnRNP G, RNA-binding motif protein, X chromosome, N-terminally processed, RBMX, HNRPG, RBMXP1
Target/Specificity	This RBMX antibody is generated from a rabbit immunized with a KLH conjugated synthetic peptide between 262-294 amino acids from the Central region of human RBMX.
Dilution	WB~~1:1000-1:2000 IHC-P~~1:100~500 E~~Use at an assay dependent concentration.
Format	Purified polyclonal antibody supplied in PBS with 0.05% (V/V) Proclin 300. This antibody is prepared by Saturated Ammonium Sulfate (SAS) precipitation followed by dialysis against PBS.
Storage	Maintain refrigerated at 2-8°C for up to 2 weeks. For long term storage store at -20°C in small aliquots to prevent freeze-thaw cycles.
Precautions	RBMX Antibody (Center) is for research use only and not for use in diagnostic or therapeutic procedures.

Protein Information

Name	RBMX
Synonyms	HNRPG, RBMXP1
Function	RNA-binding protein that plays several role in the regulation of pre- and

post-transcriptional processes. Implicated in tissue- specific regulation of gene transcription and alternative splicing of several pre-mRNAs. Binds to and stimulates transcription from the tumor suppressor TXNIP gene promoter; may thus be involved in tumor suppression. When associated with SAFB, binds to and stimulates transcription from the SREBF1 promoter. Associates with nascent mRNAs transcribed by RNA polymerase II. Component of the supraspliceosome complex that regulates pre-mRNA alternative splice site selection. Can either activate or suppress exon inclusion; acts additively with TRA2B to promote exon 7 inclusion of the survival motor neuron SMN2. Represses the splicing of MAPT/Tau exon 10. Binds preferentially to single-stranded 5'-CC[A/C]-rich RNA sequence motifs localized in a single-stranded conformation; probably binds RNA as a homodimer. Binds non-specifically to pre-mRNAs. Also plays a role in the cytoplasmic TNFR1 trafficking pathways; promotes both the IL-1-beta-mediated inducible proteolytic cleavage of TNFR1 ectodomains and the release of TNFR1 exosome-like vesicles to the extracellular compartment.

Cellular Location

Nucleus Note=Component of ribonucleosomes. Localizes in numerous small granules in the nucleus

Tissue Location

Expressed strongly in oral keratinocytes, but only weakly detected in oral squamous cell carcinomas (at protein level)

Background

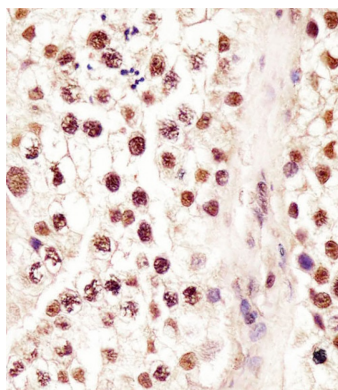
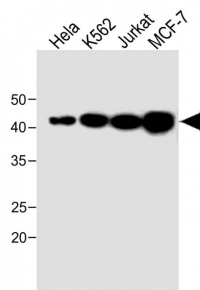
RNA-binding protein that plays several role in the regulation of pre- and post-transcriptional processes. Implicated in tissue-specific regulation of gene transcription and alternative splicing of several pre-mRNAs. Binds to and stimulates transcription from the tumor suppressor TXNIP gene promoter; may thus be involved in tumor suppression. When associated with SAFB, binds to and stimulates transcription from the SREBF1 promoter. Associates with nascent mRNAs transcribed by RNA polymerase II. Component of the supraspliceosome complex that regulates pre-mRNA alternative splice site selection. Can either activate or suppress exon inclusion; acts additively with TRA2B to promote exon 7 inclusion of the survival motor neuron SMN2. Represses the splicing of MAPT/Tau exon 10. Binds preferentially to single- stranded 5'-CC[A/C]-rich RNA sequence motifs localized in a single-stranded conformation; probably binds RNA as a homodimer. Binds non-specifically to pre-mRNAs. Plays also a role in the cytoplasmic TNFR1 trafficking pathways; promotes both the IL-1- beta-mediated inducible proteolytic cleavage of TNFR1 ectodomains and the release of TNFR1 exosome-like vesicles to the extracellular compartment.

References

Soulard M.,et al.Nucleic Acids Res. 21:4210-4217(1993).
 Venables J.P.,et al.Submitted (JUN-1998) to the EMBL/GenBank/DDBJ databases.
 Lingenfelter P.A.,et al.Mamm. Genome 12:538-545(2001).
 Lin T.-Y.,et al.Submitted (NOV-2003) to the EMBL/GenBank/DDBJ databases.
 Ota T.,et al.Nat. Genet. 36:40-45(2004).

Images

All lanes: Anti-RBMX Antibody (Center) at 1:1000 dilution
 Lane 1: Hela whole cell lysate Lane 2: K562 whole cell lysate Lane 3: Jurkat whole cell lysate Lane 4: MCF-7 whole cell lysate Lysates/proteins at 20 µg per lane.
 Secondary: Goat Anti-Rabbit IgG, (H+L), Peroxidase conjugated (ASP1615) at 1/15000 dilution. Observed band size: 43 KDa Blocking/Dilution buffer: 5% NFDM/TBST.



AP21511c staining RBMX in human testis tissue sections by Immunohistochemistry (IHC-P - paraformaldehyde-fixed, paraffin-embedded sections). Tissue was fixed with formaldehyde and blocked with 3% BSA for 0.5 hour at room temperature; antigen retrieval was by heat mediation with a citrate buffer (pH6). Samples were incubated with primary antibody (1/25) for 1 hours at 37°C. A undiluted biotinylated goat polyvalent antibody was used as the secondary antibody.

Please note: All products are 'FOR RESEARCH USE ONLY. NOT FOR USE IN DIAGNOSTIC OR THERAPEUTIC PROCEDURES'.