

ITK Antibody (N-term)

Purified Rabbit Polyclonal Antibody (Pab)

Catalog # AP21519a

Product Information

Application	WB, E
Primary Accession	Q08881
Reactivity	Human, Rat, Mouse
Host	Rabbit
Clonality	polyclonal
Isotype	Rabbit IgG
Clone Names	RB50772
Calculated MW	71831

Additional Information

Gene ID	3702
Other Names	Tyrosine-protein kinase ITK/TSK, Interleukin-2-inducible T-cell kinase, IL-2-inducible T-cell kinase, Kinase EMT, T-cell-specific kinase, Tyrosine-protein kinase Lymk, ITK, EMT, LYK
Target/Specificity	This ITK antibody is generated from a rabbit immunized with a KLH conjugated synthetic peptide between 153-187 amino acids from the N-terminal region of human ITK.
Dilution	WB~~1:2000 E~~Use at an assay dependent concentration.
Format	Purified polyclonal antibody supplied in PBS with 0.05% (V/V) Proclin 300. This antibody is prepared by Saturated Ammonium Sulfate (SAS) precipitation followed by dialysis against PBS.
Storage	Maintain refrigerated at 2-8°C for up to 2 weeks. For long term storage store at -20°C in small aliquots to prevent freeze-thaw cycles.
Precautions	ITK Antibody (N-term) is for research use only and not for use in diagnostic or therapeutic procedures.

Protein Information

Name	ITK
Synonyms	EMT, LYK
Function	Tyrosine kinase that plays an essential role in regulation of the adaptive immune response. Regulates the development, function and differentiation of

conventional T-cells and nonconventional NKT-cells. When antigen presenting cells (APC) activate T-cell receptor (TCR), a series of phosphorylation lead to the recruitment of ITK to the cell membrane, in the vicinity of the stimulated TCR receptor, where it is phosphorylated by LCK. Phosphorylation leads to ITK autophosphorylation and full activation. Once activated, phosphorylates PLCG1, leading to the activation of this lipase and subsequent cleavage of its substrates. In turn, the endoplasmic reticulum releases calcium in the cytoplasm and the nuclear activator of activated T-cells (NFAT) translocates into the nucleus to perform its transcriptional duty. Phosphorylates 2 essential adapter proteins: the linker for activation of T-cells/LAT protein and LCP2. Then, a large number of signaling molecules such as VAV1 are recruited and ultimately lead to lymphokine production, T-cell proliferation and differentiation (PubMed:[12186560](#), PubMed:[12682224](#), PubMed:[21725281](#)). Required for TCR-mediated calcium response in gamma-delta T-cells, may also be involved in the modulation of the transcriptomic signature in the Vgamma2-positive subset of immature gamma-delta T-cells (By similarity). Phosphorylates TBX21 at 'Tyr-530' and mediates its interaction with GATA3 (By similarity).

Cellular Location

Cytoplasm. Nucleus {ECO:0000250|UniProtKB:Q03526}. Note=Localizes in the vicinity of cell surface receptors in the plasma membrane after receptor stimulation

Tissue Location

T-cell lines and natural killer cell lines.

Background

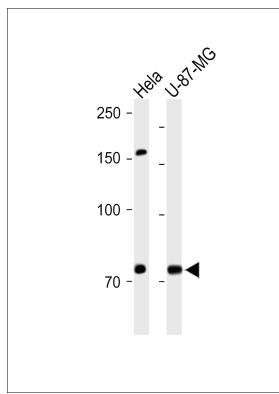
Tyrosine kinase that plays an essential role in regulation of the adaptive immune response. Regulates the development, function and differentiation of conventional T-cells and nonconventional NKT-cells. When antigen presenting cells (APC) activate T-cell receptor (TCR), a series of phosphorylation lead to the recruitment of ITK to the cell membrane, in the vicinity of the stimulated TCR receptor, where it is phosphorylated by LCK. Phosphorylation leads to ITK autophosphorylation and full activation. Once activated, phosphorylates PLCG1, leading to the activation of this lipase and subsequent cleavage of its substrates. In turn, the endoplasmic reticulum releases calcium in the cytoplasm and the nuclear activator of activated T-cells (NFAT) translocates into the nucleus to perform its transcriptional duty. Phosphorylates 2 essential adapter proteins: the linker for activation of T-cells/LAT protein and LCP2. Then, a large number of signaling molecules such as VAV1 are recruited and ultimately lead to lymphokine production, T-cell proliferation and differentiation.

References

Tanaka N.,et al.FEBS Lett. 324:1-5(1993).
 Gibson S.,et al.Blood 82:1561-1572(1993).
 Ota T.,et al.Nat. Genet. 36:40-45(2004).
 Mural R.J.,et al.Submitted (SEP-2005) to the EMBL/GenBank/DDBJ databases.
 Nore B.F.,et al.Biochim. Biophys. Acta 1645:123-132(2003).

Images

All lanes : Anti-ITK Antibody (N-term) at 1:2000 dilution
 Lane 1: Hela whole cell lysate Lane 2: U-87-MG whole cell lysate
 Lysates/proteins at 20 µg per lane. Secondary Goat Anti-Rabbit IgG, (H+L), Peroxidase conjugated (ASP1615) at 1/15000 dilution. Observed band size : 76kDa
 Blocking/Dilution buffer: 13% NFDm/TBST.



Please note: All products are 'FOR RESEARCH USE ONLY. NOT FOR USE IN DIAGNOSTIC OR THERAPEUTIC PROCEDURES'.