

# BPIFA3 Antibody (Center)

Purified Rabbit Polyclonal Antibody (Pab)

Catalog # AP21535c

## Product Information

---

<b>Application</b>	WB, E
<b>Primary Accession</b>	<a href="#">Q9BQP9</a>
<b>Reactivity</b>	Human, Mouse
<b>Host</b>	Rabbit
<b>Clonality</b>	polyclonal
<b>Isotype</b>	Rabbit IgG
<b>Clone Names</b>	RB49364
<b>Calculated MW</b>	28436

## Additional Information

---

<b>Gene ID</b>	128861
<b>Other Names</b>	BPI fold-containing family A member 3, Short palate, lung and nasal epithelium carcinoma-associated protein 3, BPIFA3, C20orf71, SPLUNC3
<b>Target/Specificity</b>	This BPIFA3 antibody is generated from a rabbit immunized with a KLH conjugated synthetic peptide between 150-185 amino acids from the Central region of human BPIFA3.
<b>Dilution</b>	WB~~1:1000 E~~Use at an assay dependent concentration.
<b>Format</b>	Purified polyclonal antibody supplied in PBS with 0.09% (W/V) sodium azide. This antibody is purified through a protein A column, followed by peptide affinity purification.
<b>Storage</b>	Maintain refrigerated at 2-8°C for up to 2 weeks. For long term storage store at -20°C in small aliquots to prevent freeze-thaw cycles.
<b>Precautions</b>	BPIFA3 Antibody (Center) is for research use only and not for use in diagnostic or therapeutic procedures.

## Protein Information

---

<b>Name</b>	BPIFA3
<b>Synonyms</b>	C20orf71, SPLUNC3
<b>Cellular Location</b>	Secreted.

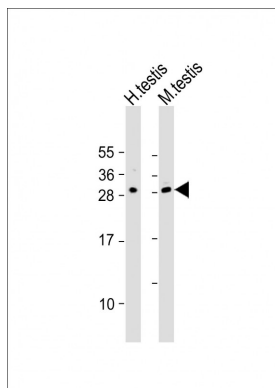
## References

---

Deloukas P., et al. Nature 414:865-871(2001).

## Images

---



All lanes : Anti-BPIFA3 Antibody (Center) at 1:2000 dilution  
Lane 1: human testis lysates Lane 2: mouse testis lysates  
Lysates/proteins at 20 µg per lane. Secondary Goat Anti-Rabbit IgG, (H+L), Peroxidase conjugated at 1/10000 dilution  
Predicted band size : 28 kDa  
Blocking/Dilution buffer: 5% NFDM/TBST.

Please note: All products are 'FOR RESEARCH USE ONLY. NOT FOR USE IN DIAGNOSTIC OR THERAPEUTIC PROCEDURES'.