

MMP23A Antibody (C-Term)

Purified Rabbit Polyclonal Antibody (Pab)

Catalog # AP21546b

Product Information

Application	WB, E
Primary Accession	O75900
Reactivity	Human, Rat, Mouse
Host	Rabbit
Clonality	polyclonal
Isotype	Rabbit IgG
Clone Names	RB53018
Calculated MW	43935

Additional Information

Gene ID	8510
Other Names	Matrix metalloproteinase-23, MMP-23, 3424-, Femalysin, MIFR-1, Matrix metalloproteinase-21, MMP-21, Matrix metalloproteinase-22, MMP-22, Matrix metalloproteinase-23, soluble form, MMP23A, MMP21
Target/Specificity	This MMP23A antibody is generated from a rabbit immunized with a KLH conjugated synthetic peptide between 328-362 amino acids from human MMP23A.
Dilution	WB~~1:1000 E~~Use at an assay dependent concentration.
Format	Purified polyclonal antibody supplied in PBS with 0.09% (W/V) sodium azide. This antibody is purified through a protein A column, followed by peptide affinity purification.
Storage	Maintain refrigerated at 2-8°C for up to 2 weeks. For long term storage store at -20°C in small aliquots to prevent freeze-thaw cycles.
Precautions	MMP23A Antibody (C-Term) is for research use only and not for use in diagnostic or therapeutic procedures.

Protein Information

Name	MMP23B
Synonyms	MMP21, MMP22
Function	Protease. May regulate the surface expression of some potassium channels by retaining them in the endoplasmic reticulum (By similarity).

Cellular Location	Endoplasmic reticulum membrane; Single-pass type II membrane protein. Membrane; Single-pass type II membrane protein. Note=A secreted form produced by proteolytic cleavage may also exist.
Tissue Location	Predominantly expressed in ovary, testis and prostate.

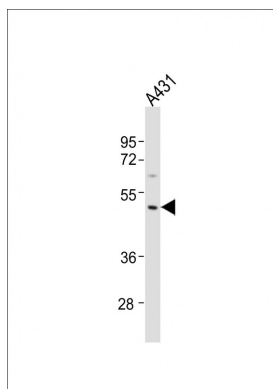
Background

Protease. May regulate the surface expression of some potassium channels by retaining them in the endoplasmic reticulum (By similarity).

References

Gururajan R.,et al.Genomics 52:101-106(1998).
Velasco G.,et al.J. Biol. Chem. 274:4570-4576(1999).
Ohnishi J.,et al.Mol. Endocrinol. 15:747-764(2001).
Gregory S.G.,et al.Nature 441:315-321(2006).

Images



Anti-MMP23A Antibody (C-Term)at 1:1000 dilution + A431 whole cell lysates Lysates/proteins at 20 µg per lane. Secondary Goat Anti-Rabbit IgG, (H+L), Peroxidase conjugated at 1/10000 dilution Predicted band size : 44 kDa Blocking/Dilution buffer: 5% NFDM/TBST.

Please note: All products are 'FOR RESEARCH USE ONLY. NOT FOR USE IN DIAGNOSTIC OR THERAPEUTIC PROCEDURES'.