

# WNT7A Antibody

Purified Rabbit Polyclonal Antibody (Pab)

Catalog # AP21552a

## Product Information

---

Application	WB, E
Primary Accession	<a href="#">O00755</a>
Reactivity	Human, Mouse
Host	Rabbit
Clonality	polyclonal
Isotype	Rabbit IgG
Clone Names	RB52610
Calculated MW	39005

## Additional Information

---

Gene ID	7476
Other Names	Protein Wnt-7a, WNT7A
Target/Specificity	This WNT7A antibody is generated from a rabbit immunized with a recombinant protein of human WNT7A.
Dilution	WB~~1:2000 E~~Use at an assay dependent concentration.
Format	Purified polyclonal antibody supplied in PBS with 0.09% (W/V) sodium azide. This antibody is purified through a protein A column, followed by peptide affinity purification.
Storage	Maintain refrigerated at 2-8°C for up to 2 weeks. For long term storage store at -20°C in small aliquots to prevent freeze-thaw cycles.
Precautions	WNT7A Antibody is for research use only and not for use in diagnostic or therapeutic procedures.

## Protein Information

---

Name	WNT7A
Function	Ligand for members of the frizzled family of seven transmembrane receptors that functions in the canonical Wnt/beta- catenin signaling pathway (By similarity). Plays an important role in embryonic development, including dorsal versus ventral patterning during limb development, skeleton development and urogenital tract development (PubMed: <a href="#">16826533</a> ). Required for central nervous system (CNS) angiogenesis and blood-brain barrier regulation (PubMed: <a href="#">30026314</a> ). Required for normal, sexually

dimorphic development of the Mullerian ducts, and for normal fertility in both sexes (By similarity). Required for normal neural stem cell proliferation in the hippocampus dentate gyrus (By similarity). Required for normal progress through the cell cycle in neural progenitor cells, for self-renewal of neural stem cells, and for normal neuronal differentiation and maturation (By similarity). Promotes formation of synapses via its interaction with FZD5 (By similarity).

**Cellular Location**

Secreted, extracellular space, extracellular matrix. Secreted

**Tissue Location**

Expression is restricted to placenta, kidney, testis, uterus, fetal lung, and fetal and adult brain

## Background

---

Ligand for members of the frizzled family of seven transmembrane receptors. Probable developmental protein. Signaling by Wnt-7a allows sexually dimorphic development of the mullerian ducts (By similarity).

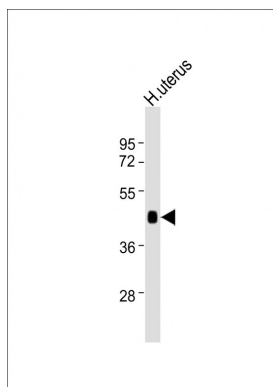
## References

---

Bui T.D.,et al.Gene 189:25-29(1997).  
Ikegawa S.,et al.Cytogenet. Cell Genet. 74:149-152(1996).  
Mural R.J.,et al.Submitted (JUL-2005) to the EMBL/GenBank/DDBJ databases.  
Huguet E.L.,et al.Cancer Res. 54:2615-2621(1994).  
Woods C.G.,et al.Am. J. Hum. Genet. 79:402-408(2006).

## Images

---



Anti-WNT7A Antibody at 1:2000 dilution + human uterus lysates Lysates/proteins at 20 µg per lane. Secondary Goat Anti-Rabbit IgG, (H+L), Peroxidase conjugated at 1/10000 dilution. Predicted band size : 39 kDa  
Blocking/Dilution buffer: 5% NFDm/TBST.

Please note: All products are 'FOR RESEARCH USE ONLY. NOT FOR USE IN DIAGNOSTIC OR THERAPEUTIC PROCEDURES'.