

PDHB Antibody (C-term)

Purified Rabbit Polyclonal Antibody (Pab)

Catalog # AP21567b

Product Information

Application	WB, E
Primary Accession	P11177
Reactivity	Human, Rat, Mouse
Host	Rabbit
Clonality	polyclonal
Isotype	Rabbit IgG
Clone Names	RB49284
Calculated MW	39233

Additional Information

Gene ID	5162
Other Names	Pyruvate dehydrogenase E1 component subunit beta, mitochondrial, PDHE1-B, PDHB, PHE1B
Target/Specificity	This PDHB antibody is generated from a rabbit immunized with a KLH conjugated synthetic peptide between 324-356 amino acids from the C-terminal region of human PDHB.
Dilution	WB~~1:2000 E~~Use at an assay dependent concentration.
Format	Purified polyclonal antibody supplied in PBS with 0.09% (W/V) sodium azide. This antibody is purified through a protein A column, followed by peptide affinity purification.
Storage	Maintain refrigerated at 2-8°C for up to 2 weeks. For long term storage store at -20°C in small aliquots to prevent freeze-thaw cycles.
Precautions	PDHB Antibody (C-term) is for research use only and not for use in diagnostic or therapeutic procedures.

Protein Information

Name	PDHB
Synonyms	PHE1B
Function	The pyruvate dehydrogenase complex catalyzes the overall conversion of pyruvate to acetyl-CoA and CO(2), and thereby links the glycolytic pathway to the tricarboxylic cycle.

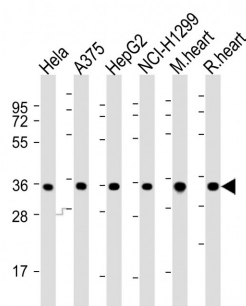
Background

The pyruvate dehydrogenase complex catalyzes the overall conversion of pyruvate to acetyl-CoA and CO₂, and thereby links the glycolytic pathway to the tricarboxylic cycle.

References

Ho L.,et al.Gene 86:297-302(1990).
Chun K.,et al.Eur. J. Biochem. 194:587-592(1990).
Huh T.L.,et al.J. Biol. Chem. 265:13320-13326(1990).
Koike K.,et al.Proc. Natl. Acad. Sci. U.S.A. 87:5594-5597(1990).
Koike K.,et al.Proc. Natl. Acad. Sci. U.S.A. 85:41-45(1988).

Images



All lanes : Anti-PDHB Antibody (C-term) at 1:2000 dilution
Lane 1: HeLa whole cell lysates Lane 2: A375 whole cell lysates Lane 3: HepG2 whole cell lysates Lane 4: NCI-H1299 whole cell lysates Lane 5: mouse heart lysates Lane 6: rat heart lysates Lysates/proteins at 20 µg per lane. Secondary Goat Anti-Rabbit IgG, (H+L), Peroxidase conjugated at 1/10000 dilution. Predicted band size : 39 kDa Blocking/Dilution buffer: 5% NFDM/TBST.

Please note: All products are 'FOR RESEARCH USE ONLY. NOT FOR USE IN DIAGNOSTIC OR THERAPEUTIC PROCEDURES'.