

# NCSTN Antibody (N-Term)

Purified Rabbit Polyclonal Antibody (Pab)

Catalog # AP21573a

## Product Information

---

<b>Application</b>	WB, E
<b>Primary Accession</b>	<a href="#">Q92542</a>
<b>Reactivity</b>	Human, Rat, Mouse
<b>Host</b>	Rabbit
<b>Clonality</b>	polyclonal
<b>Isotype</b>	Rabbit IgG
<b>Clone Names</b>	RB53031
<b>Calculated MW</b>	78411

## Additional Information

---

<b>Gene ID</b>	23385
<b>Other Names</b>	Nicastrin, NCSTN, KIAA0253
<b>Target/Specificity</b>	This NCSTN antibody is generated from a rabbit immunized with a KLH conjugated synthetic peptide between 99-133 amino acids from human NCSTN.
<b>Dilution</b>	WB~~1:2000 E~~Use at an assay dependent concentration.
<b>Format</b>	Purified polyclonal antibody supplied in PBS with 0.09% (W/V) sodium azide. This antibody is purified through a protein A column, followed by peptide affinity purification.
<b>Storage</b>	Maintain refrigerated at 2-8°C for up to 2 weeks. For long term storage store at -20°C in small aliquots to prevent freeze-thaw cycles.
<b>Precautions</b>	NCSTN Antibody (N-Term) is for research use only and not for use in diagnostic or therapeutic procedures.

## Protein Information

---

<b>Name</b>	NCSTN
<b>Synonyms</b>	KIAA0253
<b>Function</b>	Essential subunit of the gamma-secretase complex, an endoprotease complex that catalyzes the intramembrane cleavage of integral membrane proteins such as Notch receptors and APP (amyloid- beta precursor protein) (PubMed: <a href="#">10993067</a> , PubMed: <a href="#">12679784</a> , PubMed: <a href="#">25043039</a> ,

PubMed:[26280335](#), PubMed:[30598546](#), PubMed:[30630874](#)). The gamma-secretase complex plays a role in Notch and Wnt signaling cascades and regulation of downstream processes via its role in processing key regulatory proteins, and by regulating cytosolic CTNNB1 levels.

#### Cellular Location

Membrane; Single-pass type I membrane protein. Cytoplasmic vesicle membrane; Single-pass type I membrane protein. Melanosome.  
Note=Identified by mass spectrometry in melanosome fractions from stage I to stage IV

#### Tissue Location

Detected in brain (at protein level) (PubMed:10993067). Widely expressed (PubMed:11396676)

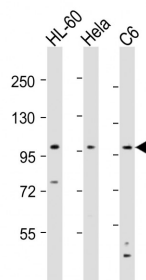
## Background

Essential subunit of the gamma-secretase complex, an endoprotease complex that catalyzes the intramembrane cleavage of integral membrane proteins such as Notch receptors and APP (beta- amyloid precursor protein). It probably represents a stabilizing cofactor required for the assembly of the gamma-secretase complex.

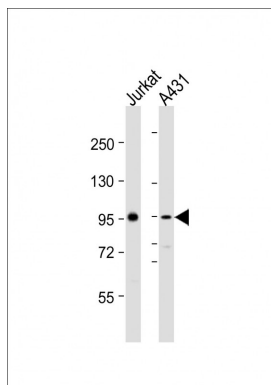
## References

Yu G.,et al.Nature 407:48-54(2000).  
Clark H.F.,et al.Genome Res. 13:2265-2270(2003).  
Ota T.,et al.Nat. Genet. 36:40-45(2004).  
Gregory S.G.,et al.Nature 441:315-321(2006).  
Mural R.J.,et al.Submitted (SEP-2005) to the EMBL/GenBank/DDBJ databases.

## Images



All lanes : Anti-NCSTN Antibody (N-Term) at 1:8000 dilution Lane 1: HL-60 whole cell lysates Lane 2: HeLa whole cell lysates Lane 3: C6 whole cell lysates Lysates/proteins at 20 µg per lane. Secondary Goat Anti-Rabbit IgG, (H+L), Peroxidase conjugated at 1/10000 dilution. Predicted band size : 78 kDa Blocking/Dilution buffer: 5% NFDM/TBST.



All lanes : Anti-NCSTN Antibody (N-Term) at 1:2000 dilution Lane 1: Jurkat whole cell lysates Lane 2: A431 whole cell lysates Lysates/proteins at 20 µg per lane. Secondary Goat Anti-Rabbit IgG, (H+L), Peroxidase conjugated at 1/10000 dilution. Predicted band size : 78 kDa Blocking/Dilution buffer: 5% NFDM/TBST.

Please note: All products are 'FOR RESEARCH USE ONLY. NOT FOR USE IN DIAGNOSTIC OR THERAPEUTIC PROCEDURES'.