

SH3GL3 Antibody (C-term)

Purified Rabbit Polyclonal Antibody (Pab)

Catalog # AP21576b

Product Information

Application	WB, E
Primary Accession	Q99963
Reactivity	Human, Rat, Mouse
Host	Rabbit
Clonality	polyclonal
Isotype	Rabbit IgG
Clone Names	RB53158
Calculated MW	39285

Additional Information

Gene ID	6457
Other Names	Endophilin-A3, EEN-B2, Endophilin-3, SH3 domain protein 2C, SH3 domain-containing GRB2-like protein 3, SH3GL3, CNSA3, SH3D2C
Target/Specificity	This SH3GL3 antibody is generated from a rabbit immunized with a KLH conjugated synthetic peptide between 290-325 amino acids from the C-terminal region of human SH3GL3.
Dilution	WB~~1:2000 E~~Use at an assay dependent concentration.
Format	Purified polyclonal antibody supplied in PBS with 0.09% (W/V) sodium azide. This antibody is purified through a protein A column, followed by peptide affinity purification.
Storage	Maintain refrigerated at 2-8°C for up to 2 weeks. For long term storage store at -20°C in small aliquots to prevent freeze-thaw cycles.
Precautions	SH3GL3 Antibody (C-term) is for research use only and not for use in diagnostic or therapeutic procedures.

Protein Information

Name	SH3GL3
Synonyms	CNSA3, SH3D2C
Function	Implicated in endocytosis. May recruit other proteins to membranes with high curvature (By similarity).

Cellular Location	Cytoplasm {ECO:0000250 UniProtKB:O35180}. Early endosome membrane {ECO:0000250 UniProtKB:O35180}; Peripheral membrane protein {ECO:0000250 UniProtKB:O35180}. Note=Associated with postsynaptic endosomes in hippocampal neurons. Associated with presynaptic endosomes in olfactory neurons {ECO:0000250 UniProtKB:O35180}
Tissue Location	Brain and testis.

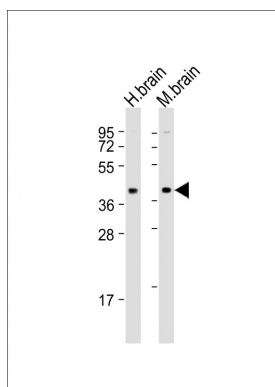
Background

Implicated in endocytosis. May recruit other proteins to membranes with high curvature (By similarity).

References

Giachino C.,et al.Genomics 41:427-434(1997).
 So C.W.,et al.Submitted (MAR-1998) to the EMBL/GenBank/DDBJ databases.
 Sittler A.,et al.Mol. Cell 2:427-436(1998).
 Cestra G.,et al.J. Biol. Chem. 274:32001-32007(1999).
 Trevaskis J.,et al.Endocrinology 146:3757-3764(2005).

Images



All lanes : Anti-SH3GL3 Antibody (C-term) at 1:2000 dilution
 Lane 1: human brain lysates
 Lane 2: mouse brain lysates
 Lysates/proteins at 20 µg per lane. Secondary Goat Anti-Rabbit IgG, (H+L), Peroxidase conjugated at 1/10000 dilution. Predicted band size : 39 kDa
 Blocking/Dilution buffer: 5% NFDM/TBST.

Please note: All products are 'FOR RESEARCH USE ONLY. NOT FOR USE IN DIAGNOSTIC OR THERAPEUTIC PROCEDURES'.