

# CPA5 Antibody (C-Term)

Purified Rabbit Polyclonal Antibody (Pab)

Catalog # AP21578b

## Product Information

---

<b>Application</b>	WB, E
<b>Primary Accession</b>	<a href="#">Q8WXQ8</a>
<b>Reactivity</b>	Human
<b>Host</b>	Rabbit
<b>Clonality</b>	polyclonal
<b>Isotype</b>	Rabbit IgG
<b>Clone Names</b>	RB53037
<b>Calculated MW</b>	49036

## Additional Information

---

<b>Gene ID</b>	93979
<b>Other Names</b>	Carboxypeptidase A5, 3417-, CPA5
<b>Target/Specificity</b>	This CPA5 antibody is generated from a rabbit immunized with a KLH conjugated synthetic peptide between 341-375 amino acids from human CPA5.
<b>Dilution</b>	WB~~1:2000 E~~Use at an assay dependent concentration.
<b>Format</b>	Purified polyclonal antibody supplied in PBS with 0.09% (W/V) sodium azide. This antibody is purified through a protein A column, followed by peptide affinity purification.
<b>Storage</b>	Maintain refrigerated at 2-8°C for up to 2 weeks. For long term storage store at -20°C in small aliquots to prevent freeze-thaw cycles.
<b>Precautions</b>	CPA5 Antibody (C-Term) is for research use only and not for use in diagnostic or therapeutic procedures.

## Protein Information

---

<b>Name</b>	CPA5
<b>Cellular Location</b>	Secreted.
<b>Tissue Location</b>	Expression is very low or not detectable.

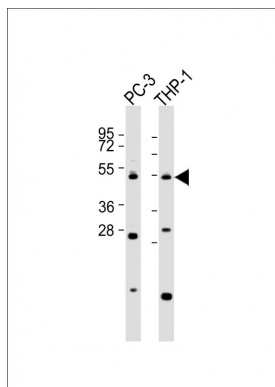
## References

---

Bonora E.,et al.Mol. Psychiatry 7:289-301(2002).  
Bentley L.,et al.J. Med. Genet. 40:249-256(2003).  
Ota T.,et al.Nat. Genet. 36:40-45(2004).  
Hillier L.W.,et al.Nature 424:157-164(2003).  
Mural R.J.,et al.Submitted (JUL-2005) to the EMBL/GenBank/DDBJ databases.

## Images

---



All lanes : Anti-CPA5 Antibody (C-Term) at 1:2000 dilution  
Lane 1: PC-3 whole cell lysates Lane 2: THP-1 whole cell  
lysates Lysates/proteins at 20 µg per lane. Secondary  
Goat Anti-Rabbit IgG, (H+L), Peroxidase conjugated at  
1/10000 dilution. Predicted band size : 49 kDa  
Blocking/Dilution buffer: 5% NFDm/TBST.

Please note: All products are 'FOR RESEARCH USE ONLY. NOT FOR USE IN DIAGNOSTIC OR THERAPEUTIC PROCEDURES'.