

MMP27 Antibody (Center)

Purified Rabbit Polyclonal Antibody (Pab)

Catalog # AP21586c

Product Information

Application	WB, E
Primary Accession	Q9H306
Reactivity	Human
Host	Rabbit
Clonality	polyclonal
Isotype	Rabbit IgG
Clone Names	RB53020
Calculated MW	59026

Additional Information

Gene ID	64066
Other Names	Matrix metalloproteinase-27, MMP-27, 3424-, MMP27
Target/Specificity	This MMP27 antibody is generated from a rabbit immunized with a KLH conjugated synthetic peptide between 333-367 amino acids from the Central region of human MMP27.
Dilution	WB~~1:2000 E~~Use at an assay dependent concentration.
Format	Purified polyclonal antibody supplied in PBS with 0.09% (W/V) sodium azide. This antibody is purified through a protein A column, followed by peptide affinity purification.
Storage	Maintain refrigerated at 2-8°C for up to 2 weeks. For long term storage store at -20°C in small aliquots to prevent freeze-thaw cycles.
Precautions	MMP27 Antibody (Center) is for research use only and not for use in diagnostic or therapeutic procedures.

Protein Information

Name	MMP27
Function	Matrix metalloproteinases degrade protein components of the extracellular matrix such as fibronectin, laminin, gelatins and/or collagens.
Cellular Location	Endoplasmic reticulum. Note=Retained in the endoplasmic reticulum due to a C-terminal extension (CTE)

Tissue Location	Expressed in B-cells (PubMed:14506071). Expressed in a subset of endometrial macrophages related to menstruation and in ovarian and peritoneal endometriotic lesions (at protein level) (PubMed:24810263).
------------------------	--

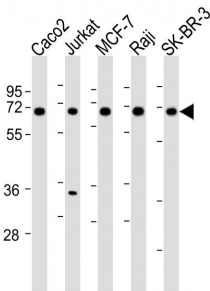
Background

Matrix metalloproteinases degrade protein components of the extracellular matrix such as fibronectin, laminin, gelatins and/or collagens.

References

Benoit de Coignac A.,et al.Submitted (OCT-1999) to the EMBL/GenBank/DDBJ databases.
 Clark H.F.,et al.Genome Res. 13:2265-2270(2003).
 Taylor T.D.,et al.Nature 440:497-500(2006).
 Bar-Or A.,et al.Brain 126:2738-2749(2003).
 Cominelli A.,et al.Mol. Hum. Reprod. 20:767-775(2014).

Images



All lanes : Anti-MMP27 Antibody (Center) at 1:2000 dilution
 Lane 1: Caco2 whole cell lysates
 Lane 2: Jurkat whole cell lysates
 Lane 3: MCF-7 whole cell lysates
 Lane 4: Raji whole cell lysates
 Lane 5: SK-BR-3 whole cell lysates
 Lysates/proteins at 20 µg per lane. Secondary Goat Anti-Rabbit IgG, (H+L), Peroxidase conjugated at 1/10000 dilution. Predicted band size : 59 kDa. Blocking/Dilution buffer: 5% NFDM/TBST.

Please note: All products are 'FOR RESEARCH USE ONLY. NOT FOR USE IN DIAGNOSTIC OR THERAPEUTIC PROCEDURES'.