

# GZMH Antibody (N-Term)

Purified Rabbit Polyclonal Antibody (Pab)

Catalog # AP21589a

## Product Information

---

<b>Application</b>	WB, E
<b>Primary Accession</b>	<a href="#">P20718</a>
<b>Reactivity</b>	Human, Rat, Mouse
<b>Host</b>	Rabbit
<b>Clonality</b>	polyclonal
<b>Isotype</b>	Rabbit IgG
<b>Clone Names</b>	RB53067
<b>Calculated MW</b>	27315

## Additional Information

---

<b>Gene ID</b>	2999
<b>Other Names</b>	Granzyme H, 3421-, CCP-X, Cathepsin G-like 2, CTSG2, Cytotoxic T-lymphocyte proteinase, Cytotoxic serine protease C, CSP-C, GZMH, CGL2, CTSG2
<b>Target/Specificity</b>	This GZMH antibody is generated from a rabbit immunized with a KLH conjugated synthetic peptide between 19-52 amino acids from human GZMH.
<b>Dilution</b>	WB~1:2000 E~Use at an assay dependent concentration.
<b>Format</b>	Purified polyclonal antibody supplied in PBS with 0.09% (W/V) sodium azide. This antibody is purified through a protein A column, followed by peptide affinity purification.
<b>Storage</b>	Maintain refrigerated at 2-8°C for up to 2 weeks. For long term storage store at -20°C in small aliquots to prevent freeze-thaw cycles.
<b>Precautions</b>	GZMH Antibody (N-Term) is for research use only and not for use in diagnostic or therapeutic procedures.

## Protein Information

---

<b>Name</b>	GZMH
<b>Synonyms</b>	CGL2, CTSG2
<b>Function</b>	Cytotoxic chymotrypsin-like serine protease with preference for bulky and aromatic residues at the P1 position and acidic residues at the P3' and P4' sites. Probably necessary for target cell lysis in cell-mediated immune

responses. Participates in the antiviral response via direct cleavage of several proteins essential for viral replication.

**Cellular Location**

Cytolytic granule.

**Tissue Location**

Constitutively expressed in NK cells.

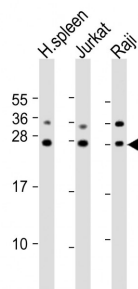
## Background

Cytotoxic chymotrypsin-like serine protease with preference for bulky and aromatic residues at the P1 position and acidic residues at the P3' and P4' sites. Probably necessary for target cell lysis in cell-mediated immune responses. Participates in the antiviral response via direct cleavage of several proteins essential for viral replication.

## References

Meier M.,et al.Biochemistry 29:4042-4049(1990).  
Haddad P.,et al.Int. Immunol. 3:57-66(1991).  
Klein J.L.,et al.Tissue Antigens 35:220-228(1990).  
Kothapalli R.,et al.Submitted (FEB-2003) to the EMBL/GenBank/DDBJ databases.  
Heilig R.,et al.Nature 421:601-607(2003).

## Images



All lanes : Anti-GZMH Antibody (N-Term) at 1:2000 dilution Lane 1: human spleen lysates Lane 2: Jurkat whole cell lysates Lane 3: Raji whole cell lysates Lysates/proteins at 20 µg per lane. Secondary Goat Anti-Rabbit IgG, (H+L), Peroxidase conjugated at 1/10000 dilution. Predicted band size : 27 kDa Blocking/Dilution buffer: 5% NFDM/TBST.

Please note: All products are 'FOR RESEARCH USE ONLY. NOT FOR USE IN DIAGNOSTIC OR THERAPEUTIC PROCEDURES'.