

# PRSS42 Antibody (Center)

Purified Rabbit Polyclonal Antibody (Pab)

Catalog # AP21605c

## Product Information

---

Application	WB, E
Primary Accession	<a href="#">Q7Z5A4</a>
Reactivity	Human
Host	Rabbit
Clonality	polyclonal
Isotype	Rabbit IgG
Clone Names	RB53122
Calculated MW	32006

## Additional Information

---

Other Names	Serine protease 42, 3421-, Testis serine protease 2, PRSS42, TESSP2
Target/Specificity	This PRSS42 antibody is generated from a rabbit immunized with a KLH conjugated synthetic peptide between 207-241 amino acids from the Central region of human PRSS42.
Dilution	WB~~1:500 E~~Use at an assay dependent concentration.
Format	Purified polyclonal antibody supplied in PBS with 0.09% (W/V) sodium azide. This antibody is purified through a protein A column, followed by peptide affinity purification.
Storage	Maintain refrigerated at 2-8°C for up to 2 weeks. For long term storage store at -20°C in small aliquots to prevent freeze-thaw cycles.
Precautions	PRSS42 Antibody (Center) is for research use only and not for use in diagnostic or therapeutic procedures.

## Protein Information

---

Name	PRSS42P ( <a href="#">HGNC:30716</a> )
Function	Plays a role in spermatogenesis. Involved in germ cell survival during meiosis.
Cellular Location	Cytoplasm {ECO:0000250 UniProtKB:Q8VIF2}. Cell membrane {ECO:0000250 UniProtKB:Q8VIF2}; Lipid-anchor, GPI-anchor {ECO:0000250 UniProtKB:Q8VIF2}

## References

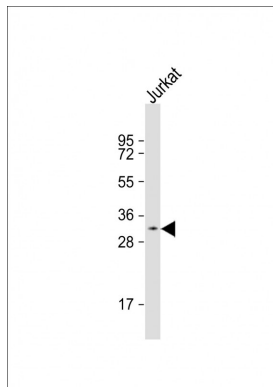
---

Puente X.S.,et al.Nat. Rev. Genet. 4:544-558(2003).

Mural R.J.,et al.Submitted (JUL-2005) to the EMBL/GenBank/DDBJ databases.

## Images

---



Anti-PRSS42 Antibody (Center)at 1:500 dilution + Jurkat whole cell lysates Lysates/proteins at 20 µg per lane. Secondary Goat Anti-Rabbit IgG, (H+L), Peroxidase conjugated at 1/10000 dilution. Predicted band size : 32 kDa Blocking/Dilution buffer: 5% NFDM/TBST.

Please note: All products are 'FOR RESEARCH USE ONLY. NOT FOR USE IN DIAGNOSTIC OR THERAPEUTIC PROCEDURES'.