

# RHBDL1 Antibody (Center)

Purified Rabbit Polyclonal Antibody (Pab)

Catalog # AP21606c

## Product Information

---

<b>Application</b>	WB, E
<b>Primary Accession</b>	<a href="#">O75783</a>
<b>Reactivity</b>	Human, Mouse
<b>Host</b>	Rabbit
<b>Clonality</b>	polyclonal
<b>Isotype</b>	Rabbit IgG
<b>Clone Names</b>	RB53133
<b>Calculated MW</b>	48314

## Additional Information

---

<b>Gene ID</b>	9028
<b>Other Names</b>	Rhomboid-related protein 1, RRP, Rhomboid-like protein 1, RHBDL1, RHBDL
<b>Target/Specificity</b>	This RHBDL1 antibody is generated from a rabbit immunized with a KLH conjugated synthetic peptide between 148-182 amino acids from the Central region of human RHBDL1.
<b>Dilution</b>	WB~~1:2000 E~~Use at an assay dependent concentration.
<b>Format</b>	Purified polyclonal antibody supplied in PBS with 0.09% (W/V) sodium azide. This antibody is purified through a protein A column, followed by peptide affinity purification.
<b>Storage</b>	Maintain refrigerated at 2-8°C for up to 2 weeks. For long term storage store at -20°C in small aliquots to prevent freeze-thaw cycles.
<b>Precautions</b>	RHBDL1 Antibody (Center) is for research use only and not for use in diagnostic or therapeutic procedures.

## Protein Information

---

<b>Name</b>	RHBDL1
<b>Synonyms</b>	RHBDL
<b>Function</b>	May be involved in regulated intramembrane proteolysis and the subsequent release of functional polypeptides from their membrane anchors.
<b>Cellular Location</b>	Membrane; Multi-pass membrane protein.

## Tissue Location

Detected in heart, brain, skeletal muscle and kidney

## Background

---

May be involved in regulated intramembrane proteolysis and the subsequent release of functional polypeptides from their membrane anchors.

## References

---

Pascall J.C.,et al.FEBS Lett. 429:337-340(1998).

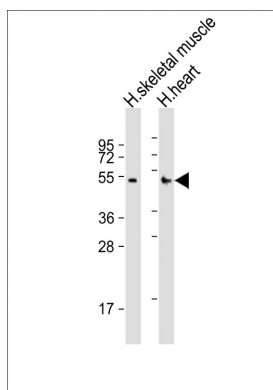
Daniels R.J.,et al.Hum. Mol. Genet. 10:339-352(2001).

Mural R.J.,et al.Submitted (SEP-2005) to the EMBL/GenBank/DDBJ databases.

Martin J.,et al.Nature 432:988-994(2004).

## Images

---



All lanes : Anti-RHBDL1 Antibody (Center) at 1:2000 dilution Lane 1: human skeletal muscle lysates Lane 2: human heart lysates Lysates/proteins at 20 µg per lane. Secondary Goat Anti-Rabbit IgG, (H+L), Peroxidase conjugated at 1/10000 dilution. Predicted band size : 48 kDa Blocking/Dilution buffer: 5% NFDM/TBST.

Please note: All products are 'FOR RESEARCH USE ONLY. NOT FOR USE IN DIAGNOSTIC OR THERAPEUTIC PROCEDURES'.