

PPP6R1 Antibody (Center)

Purified Rabbit Polyclonal Antibody (Pab)

Catalog # AP21620c

Product Information

Application	WB, E
Primary Accession	Q9UPN7
Reactivity	Human, Mouse
Host	Rabbit
Clonality	polyclonal
Isotype	Rabbit IgG
Clone Names	RB49251
Calculated MW	96724

Additional Information

Gene ID	22870
Other Names	Serine/threonine-protein phosphatase 6 regulatory subunit 1, SAPS domain family member 1, PPP6R1, KIAA1115, PP6R1, SAPS1
Target/Specificity	This PPP6R1 antibody is generated from a rabbit immunized with a KLH conjugated synthetic peptide between 455-489 amino acids from the Central region of human PPP6R1.
Dilution	WB~~1:1000-1:2000 E~~Use at an assay dependent concentration.
Format	Purified polyclonal antibody supplied in PBS with 0.09% (W/V) sodium azide. This antibody is purified through a protein A column, followed by peptide affinity purification.
Storage	Maintain refrigerated at 2-8°C for up to 2 weeks. For long term storage store at -20°C in small aliquots to prevent freeze-thaw cycles.
Precautions	PPP6R1 Antibody (Center) is for research use only and not for use in diagnostic or therapeutic procedures.

Protein Information

Name	PPP6R1
Synonyms	KIAA1115, PP6R1, SAPS1
Function	Regulatory subunit of protein phosphatase 6 (PP6). May function as a scaffolding PP6 subunit. Involved in the PP6-mediated dephosphorylation of NFkBIE opposing its degradation in response to TNF-alpha.

Cellular Location	Cytoplasm
Tissue Location	Ubiquitous with higher expression in testis.

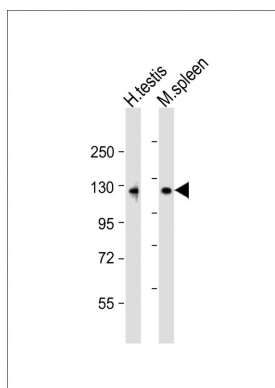
Background

Regulatory subunit of protein phosphatase 6 (PP6). May function as a scaffolding PP6 subunit. Involved in the PP6- mediated dephosphorylation of NFKBIE opposing its degradation in response to TNF-alpha.

References

Kikuno R.,et al.DNA Res. 6:197-205(1999).
 Ohara O.,et al.Submitted (JAN-2005) to the EMBL/GenBank/DDBJ databases.
 Olsen J.V.,et al.Cell 127:635-648(2006).
 Stefansson B.,et al.J. Biol. Chem. 281:22624-22634(2006).
 Stefansson B.,et al.Biochemistry 47:1442-1451(2008).

Images



All lanes : Anti-PPP6R1 Antibody (Center) at 1:1000-1:2000 dilution
 Lane 1: human testis lysate Lane 2:mouse spleen lysate
 Lysates/proteins at 20 µg per lane. Secondary Goat Anti-Rabbit IgG, (H+L), Peroxidase conjugated at 1/10000 dilution.
 Predicted band size : 97 kDa
 Blocking/Dilution buffer: 5% NFDM/TBST.

Please note: All products are 'FOR RESEARCH USE ONLY. NOT FOR USE IN DIAGNOSTIC OR THERAPEUTIC PROCEDURES'.