

SPCS1 Antibody (Center)

Purified Rabbit Polyclonal Antibody (Pab)

Catalog # AP21622c

Product Information

Application	WB, E
Primary Accession	Q9Y6A9
Reactivity	Human, Rat, Mouse
Host	Rabbit
Clonality	polyclonal
Isotype	Rabbit IgG
Clone Names	RB53137
Calculated MW	18298

Additional Information

Gene ID	28972
Other Names	Signal peptidase complex subunit 1, 34--, Microsomal signal peptidase 12 kDa subunit, SPase 12 kDa subunit, SPCS1, SPC12
Target/Specificity	This SPCS1 antibody is generated from a rabbit immunized with a KLH conjugated synthetic peptide between 66-100 amino acids from the Central region of human SPCS1.
Dilution	WB~~1:2000 E~~Use at an assay dependent concentration.
Format	Purified polyclonal antibody supplied in PBS with 0.05% (V/V) Proclin 300. This antibody is purified through a protein A column, followed by peptide affinity purification.
Storage	Maintain refrigerated at 2-8°C for up to 2 weeks. For long term storage store at -20°C in small aliquots to prevent freeze-thaw cycles.
Precautions	SPCS1 Antibody (Center) is for research use only and not for use in diagnostic or therapeutic procedures.

Protein Information

Name	SPCS1
Synonyms	SPC12
Function	Component of the signal peptidase complex (SPC) which catalyzes the cleavage of N-terminal signal sequences from nascent proteins as they are translocated into the lumen of the endoplasmic reticulum

(PubMed:[34388369](#)). Dispensable for SPC enzymatic activity (By similarity).

Cellular Location

Endoplasmic reticulum membrane {ECO:0000250 | UniProtKB:P83362};
Multi-pass membrane protein {ECO:0000250 | UniProtKB:P83362}

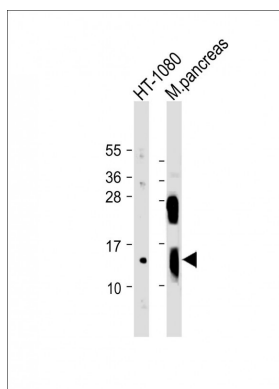
Background

Component of the microsomal signal peptidase complex which removes signal peptides from nascent proteins as they are translocated into the lumen of the endoplasmic reticulum.

References

Zhang Q.-H.,et al.Genome Res. 10:1546-1560(2000).
Ota T.,et al.Nat. Genet. 36:40-45(2004).
Kalies K.-U.,et al.J. Biol. Chem. 271:3925-3929(1996).
Muzny D.M.,et al.Nature 440:1194-1198(2006).
Burkard T.R.,et al.BMC Syst. Biol. 5:17-17(2011).

Images



All lanes : Anti-SPCS1 Antibody (Center) at 1:1000 dilution
Lane 1: HT-1080 whole cell lysate Lane 2:mouse pancreas lysate Lysates/proteins at 20 µg per lane. Secondary Goat Anti-Rabbit IgG, (H+L), Peroxidase conjugated at 1/10000 dilution. Predicted band size : 18 kDa Blocking/Dilution buffer: 5% NFDM/TBST.

Please note: All products are 'FOR RESEARCH USE ONLY. NOT FOR USE IN DIAGNOSTIC OR THERAPEUTIC PROCEDURES'.