

(DANRE) dlc Antibody (C-Term)

Purified Rabbit Polyclonal Antibody (Pab)

Catalog # AP21638b

Product Information

Application	WB, E
Primary Accession	Q9IAT6
Reactivity	Zebrafish
Host	Rabbit
Clonality	polyclonal
Isotype	Rabbit IgG
Clone Names	RB53264
Calculated MW	72548

Additional Information

Gene ID	30120
Other Names	Delta-like protein C, DeltaC, delC, dlc
Target/Specificity	This DANRE dlc antibody is generated from a rabbit immunized with a KLH conjugated synthetic peptide between 557-591 amino acids from DANRE dlc.
Dilution	WB~~1:2000 E~~Use at an assay dependent concentration.
Format	Purified polyclonal antibody supplied in PBS with 0.09% (W/V) sodium azide. This antibody is purified through a protein A column, followed by peptide affinity purification.
Storage	Maintain refrigerated at 2-8°C for up to 2 weeks. For long term storage store at -20°C in small aliquots to prevent freeze-thaw cycles.
Precautions	(DANRE) dlc Antibody (C-Term) is for research use only and not for use in diagnostic or therapeutic procedures.

Protein Information

Name	dlc
Function	Acts as a ligand for Notch receptors and is involved in somitogenesis. Can activate Notch receptors. Required in somite segmentation to keep the oscillations of neighboring presomitic mesoderm cells synchronized.
Cellular Location	Membrane; Single-pass type I membrane protein
Tissue Location	Strongly expressed in the early retina, where it precedes other delta proteins.

Also expressed in cranial ganglia, in sensory epithelia including ear and lateral line and in scattered epidermal cells. In the mesoderm, expression is visible by 50% epiboly; it is expressed subsequently in the tail bud, in stripes in the presomitic mesoderm and in the posterior half of each somite. Also expressed in notochord, blood vessels and pronephros. In contrast to other delta proteins, it is not expressed in the majority of nascent primary neurons. In somites, it marks the posterior part of each formed somite, while deltaD (dld) marks the anterior part

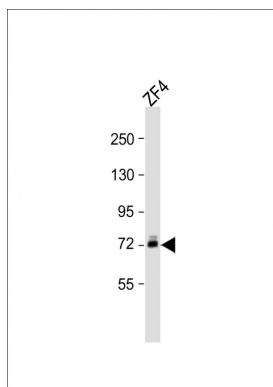
Background

Acts as a ligand for Notch receptors and is involved in somitogenesis. Can activate Notch receptors. Required in somite segmentation to keep the oscillations of neighboring presomitic mesoderm cells synchronized.

References

Smithers L.E., et al. Mech. Dev. 90:119-123(2000).
Jiang Y.-J., et al. Nature 408:475-479(2000).

Images



Anti-dlc Antibody (CTerm) at 1:2000 dilution + ZF4 whole cell lysate Lysates/proteins at 20 µg per lane. Secondary Goat Anti-Rabbit IgG, (H+L), Peroxidase conjugated at 1/10000 dilution. Predicted band size : 73 kDa
Blocking/Dilution buffer: 5% NFDM/TBST.

Please note: All products are 'FOR RESEARCH USE ONLY. NOT FOR USE IN DIAGNOSTIC OR THERAPEUTIC PROCEDURES'.