

(DANRE) opn4l Antibody (Center)

Purified Rabbit Polyclonal Antibody (Pab)

Catalog # AP21639c

Product Information

Application	WB, E
Primary Accession	Q1JPS6
Reactivity	Zebrafish
Host	Rabbit
Clonality	polyclonal
Isotype	Rabbit IgG
Clone Names	RB53160
Calculated MW	54490

Additional Information

Gene ID	352918
Other Names	Melanopsin-like, Melanopsin, Opsin-4-like, opn4l, opn4c, opn4m2
Target/Specificity	This DANRE opn4l antibody is generated from a rabbit immunized with a KLH conjugated synthetic peptide between 255-288 amino acids from the Central region of DANRE opn4l.
Dilution	WB~~1:2000 E~~Use at an assay dependent concentration.
Format	Purified polyclonal antibody supplied in PBS with 0.09% (W/V) sodium azide. This antibody is purified through a protein A column, followed by peptide affinity purification.
Storage	Maintain refrigerated at 2-8°C for up to 2 weeks. For long term storage store at -20°C in small aliquots to prevent freeze-thaw cycles.
Precautions	(DANRE) opn4l Antibody (Center) is for research use only and not for use in diagnostic or therapeutic procedures.

Protein Information

Name	opn4l
Synonyms	opn4c, opn4m2
Function	Photoreceptor implicated in non-image-forming responses to light.
Cellular Location	Cell membrane {ECO:0000250 UniProtKB:Q9QXZ9}; Multi-pass membrane protein

Tissue Location

Expressed in a subset of retinal horizontal cells.

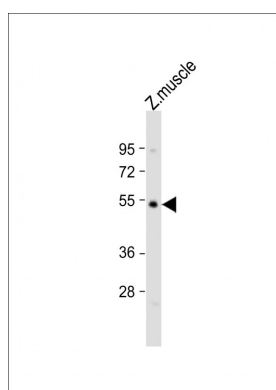
Background

Photoreceptor implicated in non-image-forming responses to light.

References

Bellingham J., et al. Brain Res. Mol. Brain Res. 107:128-136(2002).

Images



Anti-opn4l Antibody (Center) at 1:2000 dilution + zebrafish muscle lysate Lysates/proteins at 20 µg per lane. Secondary Goat Anti-Rabbit IgG, (H+L), Peroxidase conjugated at 1/10000 dilution. Predicted band size : 54 kDa Blocking/Dilution buffer: 5% NFDM/TBST.

Please note: All products are 'FOR RESEARCH USE ONLY. NOT FOR USE IN DIAGNOSTIC OR THERAPEUTIC PROCEDURES'.