

NGFR Antibody (C-term)

Purified Rabbit Polyclonal Antibody (Pab)

Catalog # AP21641b

Product Information

Application	WB, E
Primary Accession	P08138
Reactivity	Human, Rat, Mouse
Host	Rabbit
Clonality	polyclonal
Isotype	Rabbit IgG
Clone Names	RB53291
Calculated MW	45183

Additional Information

Gene ID	4804
Other Names	Tumor necrosis factor receptor superfamily member 16, Gp80-LNGFR, Low affinity neurotrophin receptor p75NTR, Low-affinity nerve growth factor receptor, NGF receptor, p75 ICD, CD271, NGFR, TNFRSF16
Target/Specificity	This NGFR antibody is generated from a rabbit immunized with a KLH conjugated synthetic peptide between 276-310 amino acids from the C-terminal region of human NGFR.
Dilution	WB~~1:1000-1:2000 E~~Use at an assay dependent concentration.
Format	Purified polyclonal antibody supplied in PBS with 0.09% (W/V) sodium azide. This antibody is purified through a protein A column, followed by peptide affinity purification.
Storage	Maintain refrigerated at 2-8°C for up to 2 weeks. For long term storage store at -20°C in small aliquots to prevent freeze-thaw cycles.
Precautions	NGFR Antibody (C-term) is for research use only and not for use in diagnostic or therapeutic procedures.

Protein Information

Name	NGFR
Synonyms	TNFRSF16
Function	Low affinity receptor which can bind to NGF, BDNF, NTF3, and NTF4. Forms a heterodimeric receptor with SORCS2 that binds the precursor forms of NGF,

BDNF and NTF3 with high affinity, and has much lower affinity for mature NGF and BDNF (PubMed:[24908487](#)). Plays an important role in differentiation and survival of specific neuronal populations during development (By similarity). Can mediate cell survival as well as cell death of neural cells. Plays a role in the inactivation of RHOA (PubMed:[26646181](#)). Plays a role in the regulation of the translocation of GLUT4 to the cell surface in adipocytes and skeletal muscle cells in response to insulin, probably by regulating RAB31 activity, and thereby contributes to the regulation of insulin- dependent glucose uptake (By similarity). Necessary for the circadian oscillation of the clock genes BMAL1, PER1, PER2 and NR1D1 in the suprachiasmatic nucleus (SCMgetaN) of the brain and in liver and of the genes involved in glucose and lipid metabolism in the liver (PubMed:[23785138](#)). Together with BFAR negatively regulates NF-kappa-B and JNK-related signaling pathways (PubMed:[22566094](#)).

Cellular Location

Cell membrane; Single-pass type I membrane protein. Cytoplasm. Perikaryon {ECO:0000250|UniProtKB:Q9Z0W1}. Cell projection, growth cone {ECO:0000250|UniProtKB:Q9Z0W1}. Cell projection, dendritic spine {ECO:0000250|UniProtKB:Q9Z0W1}

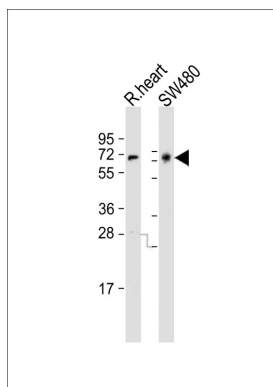
Background

Plays a role in the regulation of the translocation of GLUT4 to the cell surface in adipocytes and skeletal muscle cells in response to insulin, probably by regulating RAB31 activity, and thereby contributes to the regulation of insulin-dependent glucose uptake (By similarity). Low affinity receptor which can bind to NGF, BDNF, NT-3, and NT-4. Can mediate cell survival as well as cell death of neural cells. Necessary for the circadian oscillation of the clock genes ARNTL/BMAL1, PER1, PER2 and NR1D1 in the suprachiasmatic nucleus (SCN) of the brain and in liver and of the genes involved in glucose and lipid metabolism in the liver.

References

Johnson D.,et al.Cell 47:545-554(1986).
Ota T.,et al.Nat. Genet. 36:40-45(2004).
Zody M.C.,et al.Nature 440:1045-1049(2006).
Mural R.J.,et al.Submitted (SEP-2005) to the EMBL/GenBank/DDBJ databases.
Sehgal A.,et al.Mol. Cell. Biol. 8:3160-3167(1988).

Images



All lanes : Anti-NGFR Antibody (C-term) at1:1000-1:2000 dilution Lane 1: rat heart lysate Lane 2: SW480 whole cell lysate Lysates/proteins at 20 µg per lane. Secondary Goat Anti-Rabbit IgG, (H+L), Peroxidase conjugated at 1/10000 dilution. Predicted band size : 45 kDa Blocking/Dilution buffer: 5% NFDM/TBST.