

# RAE1 Antibody (N-Term)

Purified Rabbit Polyclonal Antibody (Pab)

Catalog # AP21654a

## Product Information

---

<b>Application</b>	WB, E
<b>Primary Accession</b>	<a href="#">P78406</a>
<b>Reactivity</b>	Human, Rat, Mouse
<b>Host</b>	Rabbit
<b>Clonality</b>	polyclonal
<b>Isotype</b>	Rabbit IgG
<b>Clone Names</b>	RB53279
<b>Calculated MW</b>	40968

## Additional Information

---

<b>Gene ID</b>	8480
<b>Other Names</b>	mRNA export factor, Rae1 protein homolog, mRNA-associated protein mrnp 41, RAE1, MRNP41
<b>Target/Specificity</b>	This RAE1 antibody is generated from a rabbit immunized with a KLH conjugated synthetic peptide between 19-42 amino acids from human RAE1.
<b>Dilution</b>	WB~~1:2000-1:4000 E~~Use at an assay dependent concentration.
<b>Format</b>	Purified polyclonal antibody supplied in PBS with 0.09% (W/V) sodium azide. This antibody is purified through a protein A column, followed by peptide affinity purification.
<b>Storage</b>	Maintain refrigerated at 2-8°C for up to 2 weeks. For long term storage store at -20°C in small aliquots to prevent freeze-thaw cycles.
<b>Precautions</b>	RAE1 Antibody (N-Term) is for research use only and not for use in diagnostic or therapeutic procedures.

## Protein Information

---

<b>Name</b>	RAE1
<b>Synonyms</b>	MRNP41
<b>Function</b>	Acts as a mRNA export factor involved in nucleocytoplasmic transport (PubMed: <a href="#">20498086</a> , PubMed: <a href="#">33849972</a> ). Plays a role in mitotic bipolar spindle formation (PubMed: <a href="#">17172455</a> ). May function in attaching cytoplasmic mRNPs to the cytoskeleton both directly or indirectly (PubMed: <a href="#">17172455</a> ).

## Cellular Location

Cytoplasm. Nucleus. Cytoplasm, cytoskeleton, spindle pole. Nucleus envelope.  
Note=Recruited from interphase nuclei to spindle MTs during mitosis.

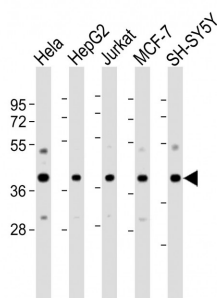
## Background

Binds mRNA. May function in nucleocytoplasmic transport and in directly or indirectly attaching cytoplasmic mRNPs to the cytoskeleton.

## References

Bharathi A.,et al.Gene 198:251-258(1997).  
Kraemer D.M.,et al.Proc. Natl. Acad. Sci. U.S.A. 94:9119-9124(1997).  
Lu L.,et al.Submitted (JUL-2003) to the EMBL/GenBank/DDBJ databases.  
Ota T.,et al.Nat. Genet. 36:40-45(2004).  
Deloukas P.,et al.Nature 414:865-871(2001).

## Images



All lanes : Anti-RAE1 Antibody (N-Term) at 1:2000-1:4000 dilution  
Lane 1: HeLa whole cell lysate  
Lane 2: HepG2 whole cell lysate  
Lane 3: Jurkat whole cell lysate  
Lane 4: MCF-7 whole cell lysate  
Lane 5: SH-SY5Y whole cell lysate  
Lysates/proteins at 20 µg per lane. Secondary Goat Anti-Rabbit IgG, (H+L), Peroxidase conjugated at 1/10000 dilution. Predicted band size : 41 kDa  
Blocking/Dilution buffer: 5% NFDM/TBST.

Please note: All products are 'FOR RESEARCH USE ONLY. NOT FOR USE IN DIAGNOSTIC OR THERAPEUTIC PROCEDURES'.