

SPPL2B Antibody (N-Term)

Purified Rabbit Polyclonal Antibody (Pab)

Catalog # AP21660a

Product Information

Application	WB, E
Primary Accession	Q8TCT7
Reactivity	Human
Host	Rabbit
Clonality	polyclonal
Isotype	Rabbit IgG
Clone Names	RB53138
Calculated MW	64644

Additional Information

Gene ID	56928
Other Names	Signal peptide peptidase-like 2B, SPP-like 2B, SPPL2b, 3423-, Intramembrane protease 4, IMP-4, Presenilin homologous protein 4, PSH4, Presenilin-like protein 1, SPPL2B, IMP4, KIAA1532, PSL1
Target/Specificity	This SPPL2B antibody is generated from a rabbit immunized with a KLH conjugated synthetic peptide between 126-160 amino acids from human SPPL2B.
Dilution	WB~~1:2000 E~~Use at an assay dependent concentration.
Format	Purified polyclonal antibody supplied in PBS with 0.09% (W/V) sodium azide. This antibody is purified through a protein A column, followed by peptide affinity purification.
Storage	Maintain refrigerated at 2-8°C for up to 2 weeks. For long term storage store at -20°C in small aliquots to prevent freeze-thaw cycles.
Precautions	SPPL2B Antibody (N-Term) is for research use only and not for use in diagnostic or therapeutic procedures.

Protein Information

Name	SPPL2B {ECO:0000303 PubMed:15385547, ECO:0000312 HGNC:HGNC:30627}
Function	Intramembrane-cleaving aspartic protease (I-CLiP) that cleaves type II membrane signal peptides in the hydrophobic plane of the membrane. Functions in ITM2B and TNF processing (PubMed: 16829951 ,

PubMed:[16829952](#), PubMed:[17965014](#), PubMed:[19114711](#), PubMed:[22194595](#)). Catalyzes the intramembrane cleavage of the anchored fragment of shed TNF-alpha (TNF), which promotes the release of the intracellular domain (ICD) for signaling to the nucleus (PubMed:[16829951](#), PubMed:[16829952](#)). May play a role in the regulation of innate and adaptive immunity (PubMed:[16829952](#)). Catalyzes the intramembrane cleavage of the simian foamy virus processed leader peptide gp18 of the envelope glycoprotein gp130 dependently of prior ectodomain shedding by furin or furin-like proprotein convertase (PC)-mediated cleavage proteolysis (PubMed:[23132852](#)).

Cellular Location

Cell membrane; Multi-pass membrane protein. Golgi apparatus membrane; Multi-pass membrane protein. Lysosome membrane; Multi-pass membrane protein. Endosome membrane; Multi-pass membrane protein. Membrane; Multi-pass membrane protein; Luminal side. Note=targeted through the entire secretory pathway to endosomes/lysosomes (PubMed:15998642)

Tissue Location

Expressed predominantly in adrenal cortex and mammary gland.

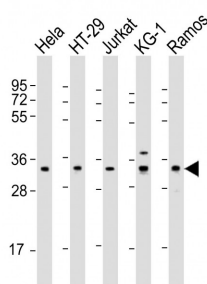
Background

Intramembrane-cleaving aspartic protease (I-CLiP) that cleaves type II membrane signal peptides in the hydrophobic plane of the membrane. Functions in ITM2B and TNF processing. Catalyzes the intramembrane cleavage of the anchored fragment of shed TNF- alpha (TNF), which promotes the release of the intracellular domain (ICD) for signaling to the nucleus. May play a role in the regulation of innate and adaptive immunity.

References

Irmeler M.,et al.Submitted (SEP-2001) to the EMBL/GenBank/DDBJ databases.
Martoglio B.,et al.Submitted (NOV-2001) to the EMBL/GenBank/DDBJ databases.
Grigorenko A.P.,et al.Biochemistry (Mosc.) 67:826-834(2002).
Nagase T.,et al.DNA Res. 7:143-150(2000).
Grimwood J.,et al.Nature 428:529-535(2004).

Images



All lanes : Anti-SPPL2B Antibody (N-Term) at 1:2000 dilution
Lane 1: HeLa whole cell lysate
Lane 2: HT-29 whole cell lysate
Lane 3: Jurkat whole cell lysate
Lane 4: KG-1 whole cell lysate
Lane 5: Ramos whole cell lysate
Lysates/proteins at 20 µg per lane. Secondary Goat Anti-Rabbit IgG, (H+L), Peroxidase conjugated at 1/10000 dilution. Predicted band size : 65 kDa
Blocking/Dilution buffer: 5% NFDM/TBST.

Please note: All products are 'FOR RESEARCH USE ONLY. NOT FOR USE IN DIAGNOSTIC OR THERAPEUTIC PROCEDURES'.