

POTEM Antibody (C-term)

Purified Rabbit Polyclonal Antibody (Pab)

Catalog # AP21661b

Product Information

Application	WB, E
Primary Accession	A6NI47
Reactivity	Human
Host	Rabbit
Clonality	polyclonal
Isotype	Rabbit IgG
Clone Names	RB48643
Calculated MW	57067

Additional Information

Gene ID	641455
Other Names	Putative POTE ankyrin domain family member M, POTEM
Target/Specificity	This POTEM antibody is generated from a rabbit immunized with a KLH conjugated synthetic peptide between 430-462 amino acids from the C-terminal region of human POTEM.
Dilution	WB~~1:2000 E~~Use at an assay dependent concentration.
Format	Purified polyclonal antibody supplied in PBS with 0.05% (V/V) Proclin 300. This antibody is prepared by Saturated Ammonium Sulfate (SAS) precipitation followed by dialysis against PBS.
Storage	Maintain refrigerated at 2-8°C for up to 2 weeks. For long term storage store at -20°C in small aliquots to prevent freeze-thaw cycles.
Precautions	POTEM Antibody (C-term) is for research use only and not for use in diagnostic or therapeutic procedures.

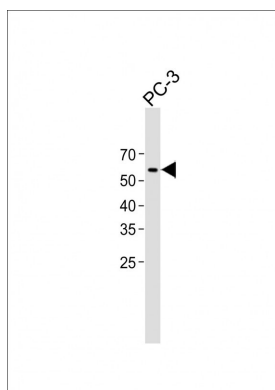
Protein Information

Name	POTEM
------	-------

References

Heilig R.,et al.Nature 421:601-607(2003).

Images



All lanes: Anti-POTEM Antibody (C-term) at 1:1000 dilution + PC-3 whole cell lysate Lysates/proteins at 20 µg per lane. Secondary: Goat Anti-Rabbit IgG, (H+L), Peroxidase conjugated (ASP1615) at 1/15000 dilution. Observed band size: 57 KDa Blocking/Dilution buffer: 5% NFDm/TBST.

Please note: All products are 'FOR RESEARCH USE ONLY. NOT FOR USE IN DIAGNOSTIC OR THERAPEUTIC PROCEDURES'.