

# PRSS33 Antibody (Center)

Purified Rabbit Polyclonal Antibody (Pab)

Catalog # AP21663c

## Product Information

---

<b>Application</b>	WB, E
<b>Primary Accession</b>	<a href="#">Q8NF86</a>
<b>Reactivity</b>	Human
<b>Host</b>	Rabbit
<b>Clonality</b>	polyclonal
<b>Isotype</b>	Rabbit IgG
<b>Clone Names</b>	RB53199
<b>Calculated MW</b>	29787

## Additional Information

---

<b>Gene ID</b>	260429
<b>Other Names</b>	Serine protease 33, 3421-, Serine protease EOS, PRSS33
<b>Target/Specificity</b>	This PRSS33 antibody is generated from a rabbit immunized with a KLH conjugated synthetic peptide between 105-128 amino acids from the Central region of human PRSS33.
<b>Dilution</b>	WB~~1:1000 E~~Use at an assay dependent concentration.
<b>Format</b>	Purified polyclonal antibody supplied in PBS with 0.09% (W/V) sodium azide. This antibody is purified through a protein A column, followed by peptide affinity purification.
<b>Storage</b>	Maintain refrigerated at 2-8°C for up to 2 weeks. For long term storage store at -20°C in small aliquots to prevent freeze-thaw cycles.
<b>Precautions</b>	PRSS33 Antibody (Center) is for research use only and not for use in diagnostic or therapeutic procedures.

## Protein Information

---

<b>Name</b>	PRSS33
<b>Function</b>	Serine protease that has amidolytic activity, cleaving its substrates before Arg residues.
<b>Cellular Location</b>	Secreted.
<b>Tissue Location</b>	Predominantly expressed in macrophages. Present in the spleen, small and

large intestine, lung and brain (at protein level). Highly expressed in peripheral leukocytes, ovary, retina, spleen and stomach. Moderately expressed in thymus, uterus and platelets, as well as some brain tissues, such as thalamus and fetal brain.

## Background

---

Serine protease that has amidolytic activity, cleaving its substrates before Arg residues.

## References

---

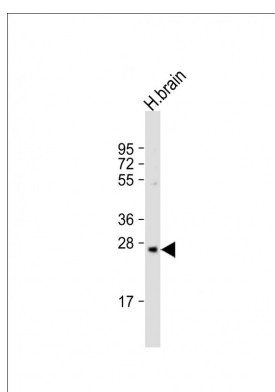
Chen C.,et al.Biochem. J. 374:97-107(2003).

Martin J.,et al.Nature 432:988-994(2004).

Mural R.J.,et al.Submitted (SEP-2005) to the EMBL/GenBank/DDBJ databases.

## Images

---



Anti-PRSS33 Antibody (Center) at 1:2000 dilution + human brain lysate Lysates/proteins at 20 µg per lane. Secondary Goat Anti-Rabbit IgG, (H+L), Peroxidase conjugated at 1/10000 dilution. Predicted band size : 30 kDa  
Blocking/Dilution buffer: 5% NFDM/TBST.

Please note: All products are 'FOR RESEARCH USE ONLY. NOT FOR USE IN DIAGNOSTIC OR THERAPEUTIC PROCEDURES'.