

PSMA6 Antibody (N-Term)

Purified Rabbit Polyclonal Antibody (Pab)

Catalog # AP21666a

Product Information

Application	WB, E
Primary Accession	P60900
Reactivity	Human, Rat, Mouse
Host	Rabbit
Clonality	polyclonal
Isotype	Rabbit IgG
Clone Names	RB53126
Calculated MW	27399

Additional Information

Gene ID	5687
Other Names	Proteasome subunit alpha type-6, 27 kDa prosomal protein, PROS-27, p27K, Macropain iota chain, Multicatalytic endopeptidase complex iota chain, Proteasome iota chain, PSMA6, PROS27
Target/Specificity	This PSMA6 antibody is generated from a rabbit immunized with a KLH conjugated synthetic peptide between 32-65 amino acids from human PSMA6.
Dilution	WB~~1:2000 E~~Use at an assay dependent concentration.
Format	Purified polyclonal antibody supplied in PBS with 0.09% (W/V) sodium azide. This antibody is purified through a protein A column, followed by peptide affinity purification.
Storage	Maintain refrigerated at 2-8°C for up to 2 weeks. For long term storage store at -20°C in small aliquots to prevent freeze-thaw cycles.
Precautions	PSMA6 Antibody (N-Term) is for research use only and not for use in diagnostic or therapeutic procedures.

Protein Information

Name	PSMA6 (HGNC:9535)
Synonyms	PROS27
Function	Component of the 20S core proteasome complex involved in the proteolytic degradation of most intracellular proteins. This complex plays numerous

essential roles within the cell by associating with different regulatory particles. Associated with two 19S regulatory particles, forms the 26S proteasome and thus participates in the ATP- dependent degradation of ubiquitinated proteins. The 26S proteasome plays a key role in the maintenance of protein homeostasis by removing misfolded or damaged proteins that could impair cellular functions, and by removing proteins whose functions are no longer required. Associated with the PA200 or PA28, the 20S proteasome mediates ubiquitin- independent protein degradation. This type of proteolysis is required in several pathways including spermatogenesis (20S-PA200 complex) or generation of a subset of MHC class I-presented antigenic peptides (20S-PA28 complex).

Cellular Location

Cytoplasm {ECO:0000250|UniProtKB:Q9QUM9, ECO:0000269|PubMed:12181345}. Nucleus. Note=Translocated from the cytoplasm into the nucleus following interaction with AKIRIN2, which bridges the proteasome with the nuclear import receptor IPO9 (PubMed:34711951) Colocalizes with TRIM5 in cytoplasmic bodies (By similarity) {ECO:0000250|UniProtKB:Q9QUM9, ECO:0000269|PubMed:34711951}

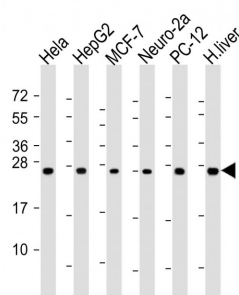
Background

The proteasome is a multicatalytic proteinase complex which is characterized by its ability to cleave peptides with Arg, Phe, Tyr, Leu, and Glu adjacent to the leaving group at neutral or slightly basic pH. The proteasome has an ATP-dependent proteolytic activity.

References

Bey F.,et al.Mol. Gen. Genet. 237:193-205(1993).
Ebert L.,et al.Submitted (JUN-2004) to the EMBL/GenBank/DDBJ databases.
Ota T.,et al.Nat. Genet. 36:40-45(2004).
Heilig R.,et al.Nature 421:601-607(2003).
Mural R.J.,et al.Submitted (SEP-2005) to the EMBL/GenBank/DDBJ databases.

Images



All lanes : Anti-PSMA6 Antibody (N-Term) at 1:2000 dilution Lane 1: HeLa whole cell lysate Lane 2: HepG2 whole cell lysate Lane 3: MCF-7 whole cell lysate Lane 4: Neuro-2a whole cell lysate Lane 5: PC-12 whole cell lysate Lane 6: human liver lysate Lysates/proteins at 20 µg per lane. Secondary Goat Anti-Rabbit IgG, (H+L), Peroxidase conjugated at 1/10000 dilution. Predicted band size : 27 kDa Blocking/Dilution buffer: 5% NFDM/TBST.

Please note: All products are 'FOR RESEARCH USE ONLY. NOT FOR USE IN DIAGNOSTIC OR THERAPEUTIC PROCEDURES'.