

CELA2B Antibody (Center)

Purified Rabbit Polyclonal Antibody (Pab)

Catalog # AP21673c

Product Information

Application	WB, E
Primary Accession	P08218
Reactivity	Human
Host	Rabbit
Clonality	polyclonal
Isotype	Rabbit IgG
Clone Names	RB53040
Calculated MW	28810

Additional Information

Gene ID	51032
Other Names	Chymotrypsin-like elastase family member 2B, Elastase-2B, CELA2B, ELA2B
Target/Specificity	This CELA2B antibody is generated from a rabbit immunized with a KLH conjugated synthetic peptide between 88-122 amino acids from the Central region of human CELA2B.
Dilution	WB~~1:2000 E~~Use at an assay dependent concentration.
Format	Purified polyclonal antibody supplied in PBS with 0.09% (W/V) sodium azide. This antibody is purified through a protein A column, followed by peptide affinity purification.
Storage	Maintain refrigerated at 2-8°C for up to 2 weeks. For long term storage store at -20°C in small aliquots to prevent freeze-thaw cycles.
Precautions	CELA2B Antibody (Center) is for research use only and not for use in diagnostic or therapeutic procedures.

Protein Information

Name	CELA2B
Synonyms	ELA2B
Function	Acts upon elastin.
Cellular Location	Secreted.

Background

Acts upon elastin.

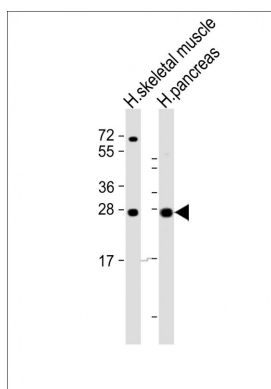
References

Kawashima I.,et al.DNA 6:163-172(1987).

Gregory S.G.,et al.Nature 441:315-321(2006).

Mural R.J.,et al.Submitted (JUL-2005) to the EMBL/GenBank/DDBJ databases.

Images



All lanes : Anti-CELA2B Antibody (Center) at 1:2000 dilution Lane 1: human skeletal muscle lysate Lane 2: human pancreas lysate Lysates/proteins at 20 µg per lane. Secondary Goat Anti-Rabbit IgG, (H+L), Peroxidase conjugated at 1/10000 dilution. Predicted band size : 29 kDa Blocking/Dilution buffer: 5% NFDM/TBST.

Please note: All products are 'FOR RESEARCH USE ONLY. NOT FOR USE IN DIAGNOSTIC OR THERAPEUTIC PROCEDURES'.